

Awake craniotomy for resection of supratentorial glioblastoma: a systematic review and meta-analysis

John J. Y. Zhang[†], Keng Siang Lee[†], Mathew R. Voisin[◊], Shawn L. Hervey-Jumper[◊], Mitchel S. Berger[◊], and Gelareh Zadeh[◊]

Yong Loo Lin School of Medicine, National University of Singapore, Singapore (J.J.Y.Z.); Bristol Medical School, Faculty of Health Sciences, University of Bristol, Bristol, UK (K.S.L.); Department of Neurosurgery, Toronto Western Hospital, University of Toronto, Toronto, Ontario, Canada (M.R.V., G.Z.); Department of Neurological Surgery, University of California, San Francisco, California, USA (S.L.H.-J., M.S.B)

Corresponding Author: John J. Y. Zhang, Yong Loo Lin School of Medicine, National University of Singapore, 1E Kent Ridge Rd, Singapore 119228, Singapore (zhangjohnjy@gmail.com).

[†]These authors are co-first authors and contributed equally to this manuscript.

Abstract

Background. The goal of glioblastoma (GBM) surgery is to maximize the extent of resection (EOR) while minimizing postoperative neurological complications. Awake craniotomy (AC) has been demonstrated to achieve this goal for low-grade gliomas in or near eloquent areas. However, the efficacy of AC for GBM resection has not been established. Therefore, we aimed to investigate the outcomes of AC for surgical resection of GBM using a systematic review and meta-analysis of published studies.

Methods. Systematic searches of Ovid MEDLINE, Embase, Cochrane Controlled Register of Controlled Trials, and PubMed were performed from database inception to September 14, 2019 for published studies reporting outcomes of AC for GBM resection. Outcome measures analyzed included EOR and the event rate of postoperative neurological deficits.

Results. A total of 1928 unique studies were identified. Fourteen studies reporting 278 patients were included in our meta-analysis. Mean age of patients was 46.9 years (95% confidence interval [CI]: 43.9–49.9). Early and late postoperative neurological deficits occurred in 34.5% (95% CI: 21.9–48.2) and 1.9% (95% CI: 0.0–9.2) of patients, respectively. Pooled percentage of gross total resection (GTR) was 74.7% (95% CI: 66.7–82.1), while the pooled percentage reduction in tumor volume was 95.3% (95% CI: 92.2–98.4).

Conclusions. Limited current evidence suggests that the use of AC for resection of supratentorial GBM is associated with a low rate of persistent neurological deficits while achieving an acceptable rate of GTR. Our findings demonstrate the potential viability of AC in GBM resection and highlight the need for further research on this topic.

Key Points

- Awake craniotomy for glioblastoma resection achieves an acceptable GTR rate of 74.7%.
- Neurological deficits persisting beyond 3 months occurred in only 1.9% of patients.

Glioblastoma (GBM) is the most common and lethal type of malignant brain tumor. It accounts for 48.3% of all malignant central nervous system tumors in the United States with an annual incidence of 3.22 per 100 000.¹ Classified by the World Health

Organization (WHO) as a grade IV glioma, it is extremely aggressive and possesses the ability to rapidly invade surrounding brain parenchyma. Due to this infiltrative nature, complete surgical resection is rendered near impossible. Coupled with a

Importance of the Study

The goal of glioblastoma (GBM) surgery is to maximize the extent of resection while minimizing postoperative neurological complications. Awake craniotomy (AC) has been demonstrated to achieve this goal for low-grade gliomas in or near eloquent areas. However, the efficacy of AC for GBM resection has not been established. We present the first systematic review

and meta-analysis investigating outcomes of AC for GBM specifically. The findings of our study show that the use of AC for resection of supratentorial GBM is associated with a low rate of persistent postoperative neurological deficits while achieving an acceptable rate of GTR. Our findings demonstrate the viability of AC for GBM resection in or near eloquent areas.

poor sensitivity to chemo- and radiotherapy, GBM inevitably recurs and is fatal despite the best treatment efforts.²⁻⁴ The median length of survival following treatment for GBM is approximately 15 months, with only 6.8% of patients surviving beyond 5 years from the time of diagnosis.^{1,5-7}

The efficacy of current treatment modalities is limited. Standard of care includes maximal safe surgical resection, chemotherapy, and radiation therapy. Among these, the extent of surgical resection is the most important prognostic factor for GBM patients' survival.^{2,8-10} Extent of resection (EOR) is largely dependent on the surgeon's capability to distinguish between normal brain tissue and tumor-invaded parenchyma to maximize resection while preserving neurological function. Awake craniotomy (AC) is an increasingly popular technique used to facilitate this distinction.¹¹ During AC, the patient is awake and responsive throughout the duration of tumor excision. This, together with intraoperative cortical and subcortical mapping, aids the surgeon in preventing injury to eloquent areas of the brain.^{12,13} AC has been shown to be superior to craniotomy under general anesthesia (GA) in minimizing the risk of postoperative neurological complications and maximizing EOR for supratentorial brain lesions in or near eloquent areas.¹³⁻¹⁵ However, outcomes of AC for resection of high-grade gliomas including GBM have not been established in the current literature. Only a few studies have reported outcomes associated with the use of AC in GBM patients, with none of these being randomized controlled trials. While there have been 2 previous systematic reviews addressing intraoperative brain mapping for glioma surgery, these studies included both asleep and awake patients as well as low-grade gliomas in their analyses.^{16,17} No systematic reviews have been completed to date on AC in GBM patients. Therefore, we aimed to investigate the outcomes of AC for surgical resection of GBM using a systematic review and meta-analysis of published studies.

Materials and Methods

This review was conducted in accordance with the Preferred Reporting Items for Systematic Reviews and Meta-Analyses (PRISMA) guidelines.¹⁸ The study protocol was registered on the PROSPERO International Prospective Register of Systematic Reviews (registration number CRD42019147758).

Search Strategy

A search string was developed to identify original research studies of AC for supratentorial GBM. The search string comprised synonyms of glioblastoma, glioma, astrocytoma, grade IV, awake craniotomy, intraoperative stimulation, and mapping ([Supplementary Table S1](#)). The search was applied to the following 4 electronic databases: Ovid MEDLINE, Embase, Cochrane Central Register of Controlled Trials (CENTRAL), and PubMed. Searches were performed in each database from its inception until September 14, 2019.

Study Selection

All titles and abstracts were screened independently by 2 reviewers (J.J.Y.Z. and K.S.L.) against a set of pre-defined eligibility criteria ([Supplementary Table S2](#)). Potentially eligible studies were selected for full-text analysis. In the event of multiple publications analyzing the same cohort, the most recent paper was used for evaluation. For studies with outcome data on the use of AC but not specific to GBM, the corresponding authors were contacted for the acquisition of raw data. A response was anticipated for 2 weeks before a decision was made on the eligibility of the study. At each stage, J.J.Y.Z. and K.S.L. reviewed 100% of the screened studies for inclusion to ensure the reliability of study selection. Disagreements were resolved by consensus or appeal to a third senior reviewer (M.R.V.). Agreement between the reviewers on study inclusion was evaluated using Cohen's kappa.¹⁹

All original English-language studies reporting EOR or neurological outcome of adult patients undergoing AC for resection of supratentorial GBM were included in our meta-analysis. Studies of small sample sizes were included following recommendations by the Cochrane Statistical Methods Group to not exclude studies purely on the basis of sample size.²⁰ Nonetheless, case reports were excluded to reduce the likelihood of publication bias. A minimum sample size of 4 was implemented in accordance with the methodologies of previously published meta-analyses.^{21,22} The quality of included studies was assessed using the Joanna Briggs Institute (JBI) checklist for prevalence studies and the JBI checklist for case series.

Data Extraction and Outcome Measures

A pro forma was developed to extract data on the following variables: study details, sample size of study, age of included patients, preoperative neurological deficits, tumor volume, eloquent areas, use of preoperative diagnostics such as functional MRI (fMRI), diffusion tensor imaging (DTI), magnetic source imaging (MSI), and navigated transcranial magnetic stimulation (nTMS), and use of intraoperative monitoring techniques such as motor and somatosensory evoked potentials (MEP and SSEP), intraoperative MRI (iMRI), and intraoperative ultrasonography (IOUS).

Primary outcome measures analyzed were EOR and the event rate of postoperative neurological deficits. Secondary outcome measures adopted were 30-day mortality, progression-free survival (PFS), and overall survival (OS).

EOR was reported as either a nonvolumetric, dichotomized outcome or a volumetric percentage, depending on the method of reporting in the included studies. For studies with nonvolumetric EOR reported, the patients were dichotomized into having either gross total resection (GTR) or subtotal resection (STR). GTR was defined according to the authors' definition. For studies with volumetric EOR reported, the percentage of resection was computed to provide an overall pooled estimate.

Postoperative neurological deficits were categorized in accordance with the classification used in the meta-analysis by De Witt Hamer et al.¹⁶ Deficits were grouped based on severity (major or minor) and permanency (early or late). Major deficits comprised muscle strength grade 1–3 on the Medical Research Council Scale, aphasia or severe dysphasia, hemianopia, and a vegetative state. All other neurological deficits were considered minor. Minor deficits included but were not limited to grade 4 monoparesis, isolated central facial palsy or other cranial nerve deficit, dysnomia, somatosensory syndrome, and parietal syndrome. Early and late deficits were defined as resolving within 3 months and lasting beyond 3 months after surgery, respectively.

Statistical Analysis

Meta-analyses of primary endpoints were done assuming the random effects model, which accounts for variance across studies.²³ Study variance refers to clinical and methodological diversity across studies that arises due to differences in patient characteristics, indications for treatment, treatment methods, surgical techniques, and outcome assessments. Pooled proportions were computed with the inverse variance method using the variance-stabilizing Freeman-Tukey double arcsine transformation.²⁴ Confidence intervals (CIs) for individual studies were calculated using the Wilson Score confidence interval method with continuity correction. The I^2 statistic was used to present between-study heterogeneity, where $I^2 \leq 30\%$, between 30% and 50%, between 50% and 75%, and $\geq 75\%$ were considered to indicate low, moderate, substantial, and considerable heterogeneity, respectively.²⁵ The I^2 value quantifies the proportion of between-study variation that is attributable to genuine differences in results rather than chance.²⁶ P values for the

I^2 statistic were derived from the chi-squared distribution of Cochran Q test. To identify influential studies or outliers, sensitivity analyses were performed by omitting one study at a time. For pooling of means of numerical variables, we imputed missing means and standard deviations (SDs) from medians and interquartile ranges (IQRs) using the method proposed by Wan et al.²⁷

Publication bias was assessed using funnel plots, where an asymmetrical distribution of studies was suggestive of bias.²⁸ Quantitative analysis of funnel plot asymmetry was done using Egger's regression test, based on a weighted linear regression of the treatment effect (expressed as a Freeman-Tukey double arcsine transformed proportion) on its standard error.²⁹ Where publication bias was evident, Duval and Tweedie's trim-and-fill method was adopted to estimate the number of studies missing due to publication bias, augment the observed data, and recompute the summary estimate based on the complete data.³⁰

All statistical analyses were performed using R software version 3.4.3 (R Foundation for Statistical Computing, 2016). P values less than .05 were considered statistically significant.

Results

Baseline Study Characteristics

Our search yielded 1928 unique publications after removal of duplicates. After screening of titles and abstracts, 147 publications were reviewed in full text. A total of 14 studies reporting 278 patients were eventually included for our meta-analysis (Figure 1).^{31–44} Reliability of study selection between observers was substantial at both the title and abstract screening stage (Cohen's $\kappa = 0.75$) and the full-text review stage (Cohen's $\kappa = 0.71$).¹⁹ All included studies were retrospective. Using the JBI checklist for prevalence studies, 12 studies attained a full score of 9 and 2 studies attained a score of 8 (Supplementary Table S3). Using the JBI checklist for case series, 11 studies attained a full score of 10, 1 study attained a score of 9, and 2 studies attained a score of 8 (Supplementary Table S4).

Mean and SD of age were reported in 11 of the 14 included studies across 134 patients. Pooled mean age across these 11 studies was 46.9 years (95% CI: 43.9–49.9; Figure 2). Study heterogeneity was not statistically significant ($I^2 = 41.6\%$ [95% CI: 0.0–71.2], $P = .072$). Preoperative tumor volume was reported in 8 studies across 89 patients. Pooled mean tumor volume was 35.1 cm³ (95% CI: 21.7–48.5; Supplementary Figure S1). Study heterogeneity for tumor volume was considerable ($I^2 = 84.0\%$ [95% CI: 70.2–91.4], $P < .001$). Preoperative neurological deficits were reported in 3 studies and were present in all 16 patients in these 3 studies. Proximity of the resected tumor to eloquent areas was reported in 13 of the 14 included studies. In these 13 studies, 264 out of 272 patients (97.1%) had a tumor located in or near an eloquent area. Table 1 summarizes the baseline characteristics and patient outcomes in each included study.

The use of preoperative diagnostics was reported in 4 studies. fMRI was used in 18 patients and DTI was used in

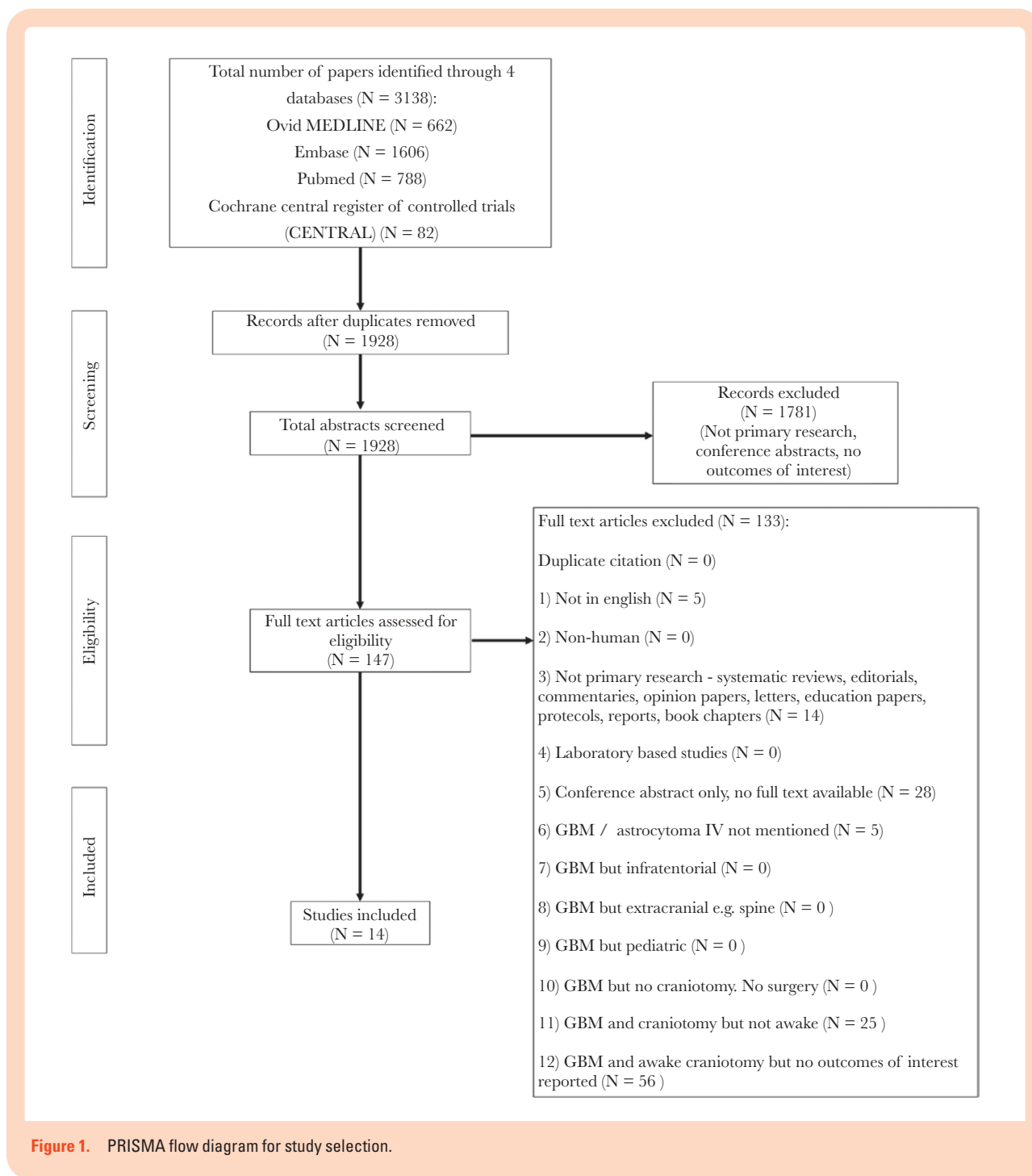


Figure 1. PRISMA flow diagram for study selection.

16 patients. There was no reported use of MSI or nTMS. The use of intraoperative monitoring adjuncts was reported in 9 studies. MEP or SSEP was used in 179 patients and iMRI was used in 28 patients. There was no reported use of IOUS.

Neurological Outcome

Neurological outcome was reported in 6 of the included studies. Timing of neurological deficits (early or late) was specified in 5 of the 6 studies, in a total of 62 patients.

Pooled early neurological deficit rate was 34.5% (95% CI: 21.9–48.2; **Figure 3**). Study heterogeneity was negligible ($I^2 = 0.0\%$ [95% CI: 0.0–65.5], $P = .660$). When each of the 5 studies was omitted one at a time, pooled early neurological deficit rate ranged from 23.5% to 36.7%.

Publication bias for early neurological deficits was statistically significant using Egger's regression test ($P = .035$; **Supplementary Figure S2**). Using the trim-and-fill method, 3 additional studies were computed, giving an adjusted pooled early neurological deficit rate of 40.1% (95% CI: 28.5–52.8). Adjusted study heterogeneity

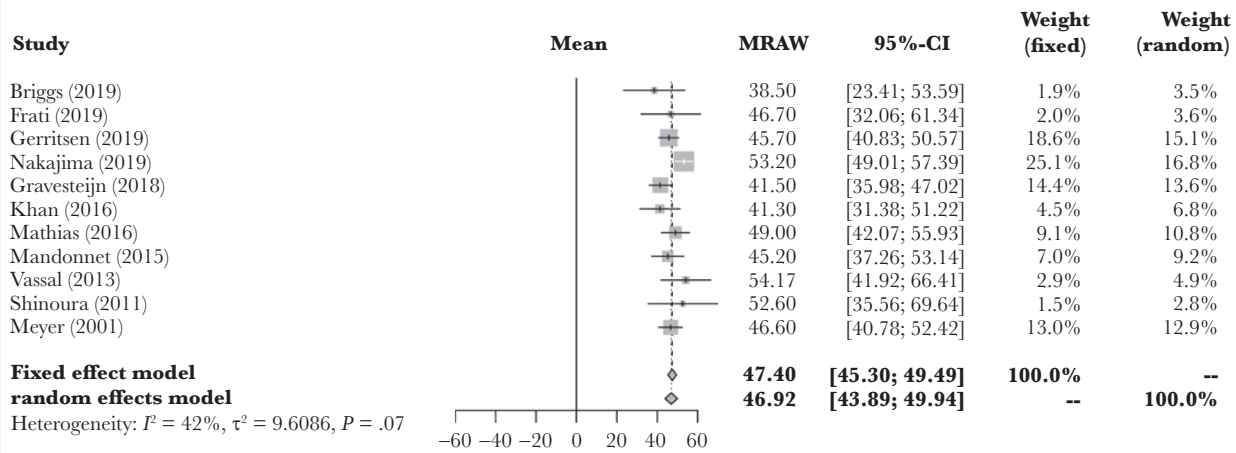


Figure 2. Forest plot of pooled mean age of included patients.

Table 1. Summary of Included Studies

Author, Year	Sample Size	Age (years)	Preoperative Tumor Volume (cm ³)	Use of Subcortical Mapping	Volumetric Extent of Resection (%)	Gross Total Resection	Early Neurological Deficit	Late Neurological Deficit
Briggs et al., 2019 ³¹	4	38.5 ± 15.4	46.0 ± 32.8	Yes	74.6 ± 17.1	NR	1 (25%)	0
Frati et al., 2019 ³²	6	46.7 ± 18.3	26.3 ± 15.4	Yes	NR	5 (83.3%)	1 (16.7%)	0
Gerritsen et al., 2019 ³³	37	45.7 ± 15.1	66.3 ± 64.3	Yes	94.9 ± 10.6	NR	16 (43.2%)	3 (8.1%)
Nakajima et al., 2019 ³⁴	30	53.2 ± 11.7	NR	Yes	97.0 ± 8.7	NR	NR	NR
Pichierri et al., 2019 ³⁵	6	NR	47.0 ± 38.0	Yes	NR	4 (66.7%)	NR	NR
Gravesteijn et al., 2018 ³⁶	5	41.5 ± 6.3	NR	No	71.8 ± 24 ^a	NR	NR	NR
Khan et al., 2016 ³⁷	6	41.3 ± 12.4	NR	No	NR	NR	NR ^b	NR ^b
Mathias et al., 2016 ³⁸	9	49.0 ± 10.6	NR	Yes	NR	7 (77.8%)	3 (33.3%)	0
Mandonnet et al., 2015 ³⁹	13	45.2 ± 14.6	27.2 ± 32.5	Yes	99.7 ± 0.8	NR	NR	NR
Vassal et al., 2013 ⁴⁰	6	54.2 ± 15.3	34.5 ± 12.7	Yes	97.0 ± 6.1	NR	1 (16.7%)	0
Shinoura et al., 2011 ⁴¹	5	52.6 ± 19.4	NR	No	NR	2 (40%)	NR	NR
Kim et al., 2009 ⁴²	134	NR	NR	No	NR	98 (73.1%)	NR	NR
Low et al., 2007 ⁴³	4	NR	41.8 ± 26.1	Yes	87.5 ± 8.1	NR	NR	NR
Meyer et al., 2001 ⁴⁴	13	46.6 ± 10.7	10.3 ± 11.7	No	97.5 ± 6.6	NR	NR	NR

NR, not reported. All numerical data reported as mean ± standard deviation. All categorical outcome data reported as *n* (%).

^aImputed from median and interquartile range.

^bOne case of postoperative mild right facial weakness which persisted till discharge was reported, but the permanency of deficit was unknown.

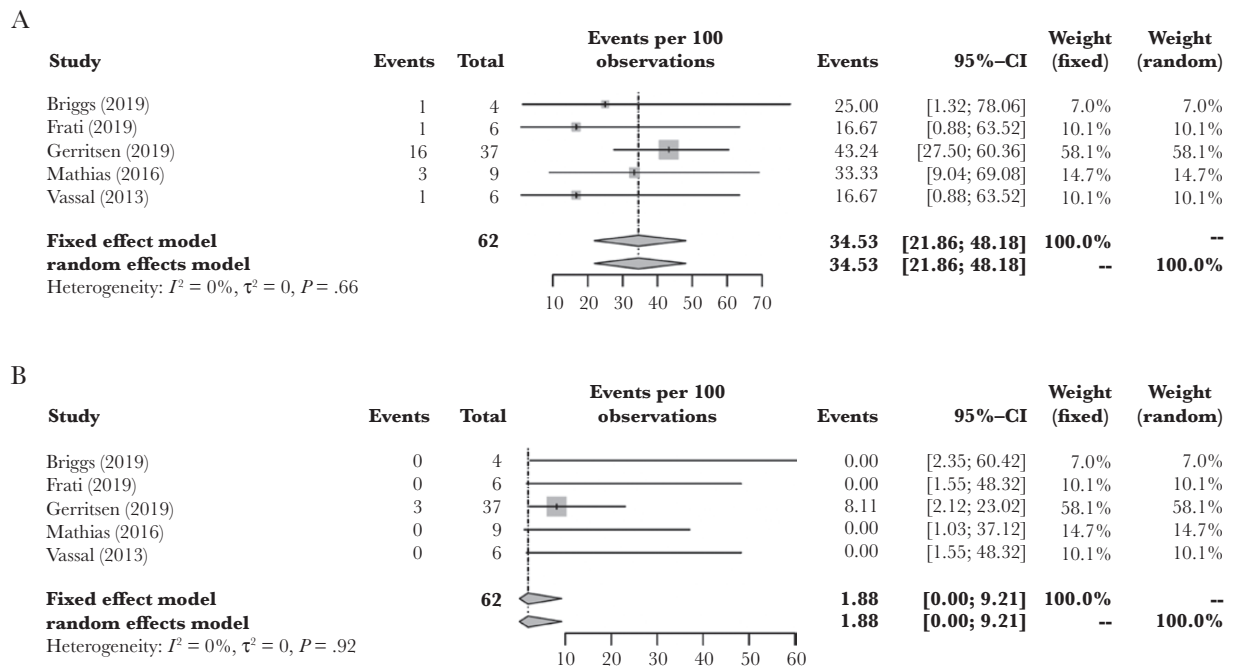


Figure 3. Forest plots of pooled (A) early and (B) late postoperative neurological deficits in included patients.

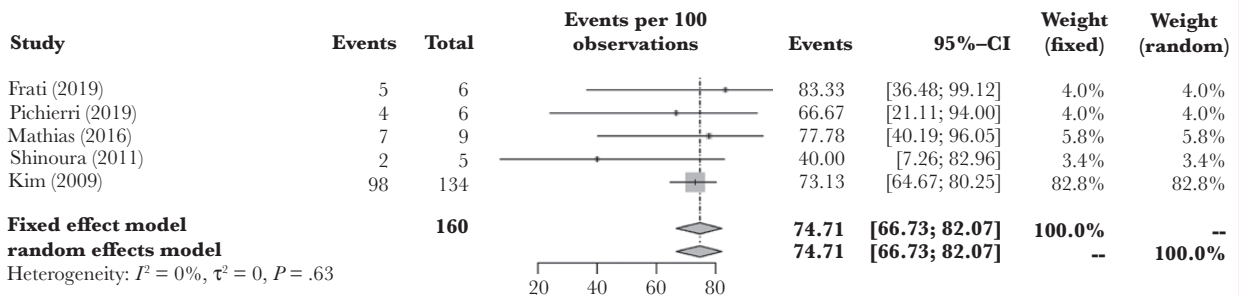


Figure 4. Forest plot of pooled percentage of gross total resection in included patients.

was negligible ($I^2 = 0.0\%$ [95% CI: 0.0–63.0], $P = .525$). Severity of early neurological deficits was specified in 18 patients. Twelve patients had minor deficits and 6 patients had major deficits.

Pooled late neurological deficit rate was 1.9% (95% CI: 0.0–9.2) in the 62 patients with the timing of deficit reported (Figure 3). Study heterogeneity was negligible ($I^2 = 0.0\%$ [95% CI: 0.0–12.8], $P = .917$). When each of the 5 studies was omitted one at a time, pooled late neurological deficit rate ranged from 0.0% to 2.6%. There was no evidence of publication bias for late neurological deficits demonstrated using Egger's regression test ($P = .069$; Supplementary Figure S2). Severity of late neurological deficits was specified in 3 patients. One patient had a minor deficit and 2 patients had major deficits.

Extent of Resection

EOR was reported in a total of 13 studies. In 5 of the 13 studies, the number of patients with GTR was specified. In a total of 160 patients, pooled percentage of GTR was 74.7% (95% CI: 66.7–82.1; Figure 4). Study heterogeneity was negligible ($I^2 = 0.0\%$ [95% CI: 0.0–68.1], $P = .625$). When each of the 5 studies was omitted one at a time, pooled GTR rate ranged from 70.1% to 75.5%. There was no evidence of publication bias for GTR demonstrated using Egger's regression test ($P = .453$; Supplementary Figure S3).

Eight studies reported volumetric EOR. Across 112 patients, pooled mean percentage reduction in tumor volume was 95.3% (95% CI: 92.2–98.4; Figure 5). Study heterogeneity was considerable ($I^2 = 80.8\%$ [95% CI: 63.0–90.0], $P < .001$).

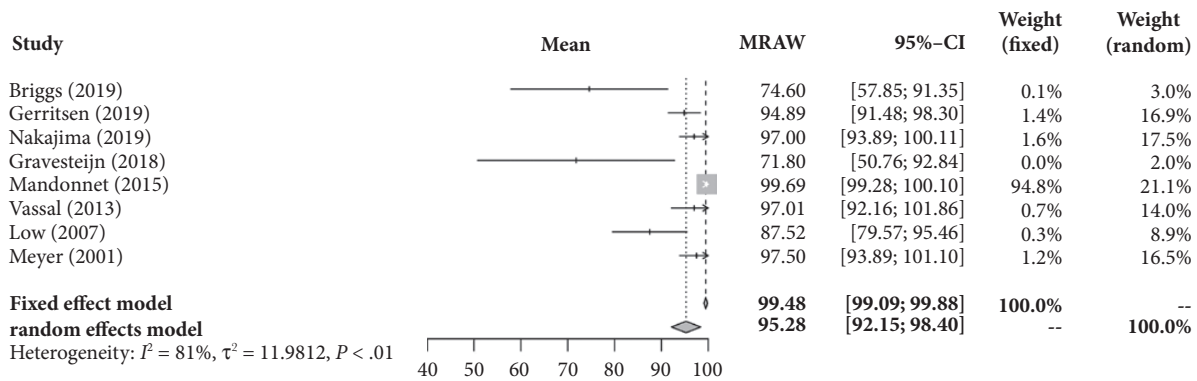


Figure 5. Forest plot of pooled volumetric extent of resection in included patients.

Survival Outcome

There were no deaths within 30 days after surgery in the 6 studies that reported 30-day mortality. PFS and OS were reported in 5 studies, but the reported data were insufficient or too heterogenous to compute pooled mean estimates. Pichierri et al.³⁵ reported an average PFS of 21 months in 6 GBM patients. Among these 6 patients, all 4 patients who underwent GTR had OS of more than 25 months, while the 2 patients who underwent STR died at 12 and 30 months. In the study by Briggs et al.,³¹ 2 out of 4 GBM patients were disease-free at 11 months after surgery, while the other 2 had died as a result of tumor progression. Gerritsen et al.³³ reported a median OS of 17 months in a sample of 37 patients. Of the 5 GBM patients reported by Gravesteijn et al.,³⁶ 2 had died at 12-month follow-up and 3 had died at 24 months after surgery. Meyer et al.⁴⁴ reported a mean OS of 13.3 months in a sample of 13 patients.

AC Versus Craniotomy Under GA

Four studies analyzed and compared an AC arm with a "Craniotomy under GA" arm. EOR was significantly higher with AC than craniotomy under GA in the study by Gerritsen et al.³³ (mean EOR 94.89% for AC vs 70.30% for craniotomy under GA, $P = .0001$), but did not achieve statistical significance in the other 3 studies. The study by Gerritsen et al. was also the only one to find a lower rate of late minor postoperative complications with AC than craniotomy under GA. Survival outcome was similar between AC and craniotomy under GA in the studies by Gerritsen et al.³³ and Gravesteijn et al.,³⁶ but higher for the AC group in Pichierri et al.³⁵ (4 out of 6 patients alive at an average of 25 months' follow-up for the AC group vs 1 out of 8 patients alive at 26 months in the GA group). Notably, both groups in the study by Pichierri et al. also had iMRI used. Long-term functional status was evaluated only in the study by Nakajima et al.,³⁴ which showed significantly higher Karnofsky Performance Scale (KPS) scores in the AC group compared to the GA group. Of these studies, the study by Gerritsen et al.³³ was the only one that controlled for tumors in eloquent areas.

Discussion

Our systematic review and meta-analysis demonstrated a pooled early neurological deficit rate of 34.5% (40.1% after adjusting for possible publication bias) and late neurological deficit rate of 1.9% across patients who underwent AC for GBM. Pooled GTR rate was 74.7%, with a pooled mean volumetric EOR of 95.9%. To the best of our knowledge, this is the first study to systematically assess the outcomes of AC specifically for GBM patients using a comprehensive meta-analysis.

Neurological Outcome

A key takeaway from our study is that while there may be a relatively higher rate of early neurological deficits in the first 3 months after surgery, these deficits appear to be temporary, as the rate of deficits that persist beyond 3 months is minimal. All patients who had early postoperative deficits within 3 months of surgery were reassessed after 3 months, with none being lost to follow-up due to disease progression or other reasons. This is in keeping with the meta-analysis of intraoperative stimulation mapping (ISM) for all types of gliomas by DeWitt Hamer et al.,¹⁶ in which there was a substantially higher early neurological deficit rate of 47.9% compared to the late neurological deficit rate of 6.4%. A number of factors likely contributed to this finding. First, AC involves intraoperative mapping through cortical and subcortical electrostimulation. Such stimulation works by reversible modulation of populations of neurons within and around the tumor thereby causing transient sensorimotor or behavioral changes. This process creates functional cortical and subcortical maps within the framework of an individual patient's anatomy. The resultant transient deficits may persist from a few weeks to 3 months after surgery.¹⁶ Second, immediate postoperative neurological deficits after AC can largely be attributed to cerebral edema and manipulation and retraction of tissue. A diagnosis of GBM is also significantly associated with a higher risk of intraoperative brain swelling, which

may account for intraoperative seizures or worsening of neurological deficits.⁴⁵ Third, as almost all of our included patients had a tumor located in or near an eloquent area, the presence of resection-induced contusion, edema, and hypoperfusion adjacent to the resection cavity could easily contribute to the significant rate of early neurological deficits. It is unknown whether the deficits presented in our meta-analysis are ischemic in nature as none of the included studies reported postoperative assessment of patients using diffusion-weighted MRI (DWI). Similarly, it was not possible to draw conclusions on the severity of neurological deficits given the small sample of patients with severity data reported. Nonetheless, a substantial proportion of postoperative deficits were temporary and resolved within a short span of 3 months after the surgery.

Several surgical adjuncts could be adopted during AC to optimize postoperative neurological outcome. These include intraoperative testing methods that play a critical role in achieving reliable cortical localization. For example, visual object naming is a specific task designed to assess the presence and degree of anomia, a very common symptom in many aphasic subjects.⁴⁶ Its use is important in accurate identification of the language area given that there can be a high degree of individual variability in language localization.⁴⁷ Subcortical mapping, in addition to cortical mapping, is another valuable intraoperative technique. Compared to cortical localization, identification of subcortical functional pathways may pose a greater challenge due to our relatively poorer understanding of subcortical anatomical and functional connectivity.⁴⁸ Furthermore, there is a lack of established functional neuroimaging techniques for subcortical brain structures. While advances in DTI have allowed for better preoperative visualization of subcortical tracts, DTI provides only anatomical and not functional information and may be limited in areas where the tracts pass through the tumor or edema.^{49–52} For these reasons, ISM remains the gold standard for accurate localization of subcortical pathways. The use of subcortical mapping for both language and motor pathways has been demonstrated to be beneficial in reducing postoperative neurological complications.^{48,52–54} In our meta-analysis, 9 out of 14 included studies reported the use of subcortical mapping. However, we were unable to test for its association with postoperative neurological deficits as all the studies that reported neurological outcomes also reported the use of subcortical mapping.

Besides intraoperative adjuncts, several technical nuances aimed at reducing postoperative neurological deficits have also been described. Studies have purported that the distance between the point of electrostimulation and the vital functional structures of the brain is associated with the permanency of postoperative neurological deficits.^{55,56} Strategies to increase this distance include using a higher electrical current and pressing the stimulator firmly against the wall of the resection cavity to widen the safety margin. To reduce the risk of hypoperfusion and ischemia, subpial dissection while paying careful attention to vascular structures, coupled with postoperative assessment of cerebral perfusion using DWI, may prove beneficial.^{57,58} Other methods to minimize postoperative deficits include perioperative

corticosteroids to reduce edema and intensive physical therapy after surgery.

Extent of Resection

While an optimal neurological outcome is critical to preserve quality of life after surgery, tumor control with maximal safe resection remains the main goal of surgery. In the current molecular era, there is growing interest in the interplay between EOR and the molecular subtype of gliomas. A recent multicenter study by Molinaro et al.⁵⁹ clarified this by demonstrating improved OS associated with maximal resection of contrast-enhanced tumor, regardless of isocitrate dehydrogenase 1 or 2 gene (IDH)-wild or IDH-mutant subtype and methylation status of the promoter region of the DNA repair enzyme *O*⁶-methylguanine-DNA methyltransferase (MGMT).⁶⁰ In fact, in younger patients below the age of 65 years, surgical resection of even the non-contrast-enhancing disease was shown to confer a greater survival benefit. Similarly, in a recent study of 1204 GBM patients, Al-Holou et al.⁶¹ advocated the use of perilesional rather than intralesional resection to ensure removal of all contrast-enhancing components of the tumor while minimizing neurological deficits. The importance of maximizing tumor resection as outlined in these studies is precisely the reason why AC plays a critical role in GBM surgery. In patients who underwent AC for GBM resection, our meta-analysis demonstrated a GTR rate of 74.7%. This is comparable to the 79.1% GTR rate reported in the meta-analysis of ISM for high-grade gliomas by Gerritsen et al., and the 74.9% GTR rate demonstrated in the meta-analysis of ISM for all types of gliomas by De Witt Hamer et al.¹⁶ The acceptable pooled GTR rate from our meta-analysis suggests that the low rate of persistent postoperative neurological deficits in patients who underwent AC for GBM resection did not come at the price of reduced EOR.

Despite its benefits, the use of AC is not without its risks, hence the decision to perform AC should be deliberated prudently. The risk of an intraoperative seizure has been reported to be higher in patients undergoing AC for resection of intraaxial tumors and tumors of the supplementary motor area.^{62,63} Intraoperative seizure is a known risk factor for procedure failure, reduced rate of GTR, and higher incidence of short-term postoperative motor and speech deterioration.⁶² Additionally, elderly patients undergoing AC tend to have a longer length of stay than their younger counterparts, which may be related to their reduced tolerability of the procedure.⁶⁴ The patients included in our meta-analysis had a mean age of 46.9 years (95% CI: 43.9–49.9), which may not be representative of older GBM patients (median age in the general cohort of GBM patients is 65 years).¹ Our meta-analysis demonstrated a low rate of permanent neurological deficits despite a substantial proportion of patients (97.1%) having tumors located in or near eloquent areas. Therefore, considering the above risks of AC, we recommend the use of AC specifically for tumors in or near the eloquent areas of the brain. Tumors located in or near speech areas typically warrant the use of AC, but ISM under GA could be a safe alternative for other eloquent areas such as motor areas.⁶⁵ With that said, there has been

growing recognition that the execution of a motor function involves not only muscle contraction, but also a combination of sensory feedback and higher cortical functions that can only be appreciated under awake conditions.⁶⁶

To safely maximize EOR in glioma surgery, several technologies besides AC have been developed in recent years. These include iMRI, IOUS, and fluorescence-guided surgery.^{67–69} In a recent meta-analysis of patients with high-grade gliomas, Eljamel et al.⁷⁰ showed that the above intraoperative modalities attained comparable rates of GTR, with a slightly higher GTR rate for the fluorescein-guided resections. The GTR rate for patients allocated to the fluorescence-guided surgery group, 5-ALA fluorescence-guided surgery group, IOUS, and iMRI groups was 84.4%, 69.1%, 73.4%, and 70%, respectively. However, there is a paucity of well-established evidence demonstrating the EOR outcomes of these intraoperative adjuncts in GBM resection specifically.

AC Versus Craniotomy Under GA

Several studies have sought to compare the outcomes of AC with craniotomy under GA for tumors located in eloquent areas. In a retrospective case-control study of 58 patients with perirolandic, eloquent, motor area gliomas, Eseonu et al.⁷¹ identified a higher rate of GTR, shorter length of hospital stay, and higher KPS scores in the AC group than the GA group. A recent meta-analysis corroborated these findings by demonstrating a higher mean EOR with AC than with GA in a total of 2351 glioma patients who had tumors located near or in motor areas of the brain.⁷² However, these studies also included low-grade gliomas hence their findings may not be applicable to GBM specifically. Our systematic review identified 4 studies that directly compared outcomes of AC and craniotomy under GA for GBM patients. Conclusions drawn from these studies must be judiciously interpreted given their small sample sizes and retrospective nature. The study by Gerritsen et al. was the only one that adjusted for eloquent tumors. In this retrospective matched case-control study, a greater EOR and lower rate of late minor postoperative complications were observed in patients who had undergone AC. However, the authors were unable to show a clear survival benefit between the AC and GA groups. The recent large analysis by Molinaro et al.⁵⁹ revealed a median OS of 14.2 months in 761 surgical GBM patients. In comparison, the limited survival data of AC for GBM identified in our systematic review showed survival rates comparable to if not better than that reported by Molinaro et al. Such a comparison, however, is greatly limited and could be confounded by many patient and treatment factors that were unaccounted for. Therefore, whether the benefits conferred by AC in safely maximizing EOR translate into higher survival rates down the road for GBM patients remains a question that needs to be addressed.

Limitations

Limitations of our meta-analysis, beyond the specific ones that have been mentioned with their respective findings, include the retrospective nature of the included studies and the heterogeneity among them. Due to the small number

of suitable studies, our ability to perform certain analyses including meta-regression for the exploration of possible confounders was limited. In addition, a few of the included studies had small sample sizes, which may have introduced publication bias and exacerbated the file-drawer problem. To minimize the extent of these limitations, we performed sensitivity analyses to attempt to identify outlier studies. Finally, our results must be interpreted bearing in mind that the patients included in our analysis were relatively young with a mean age of 46.9 years. This may not be reflective of the majority of GBM patients, who have a median age of 65 years.¹

Future Directions

Moving forward, initial steps include small prospective studies designed to determine the safety of AC in patients with GBM. Ultimately, a randomized controlled trial or large prospective cohort study is needed in order to account for the bias and confounders that exist in retrospective studies, one of which is currently underway.⁷³ The findings from our meta-analysis contribute to addressing this gap in the literature at present and highlight a need for more rigorous data from prospective studies.

Conclusions

Current evidence on the use of AC for supratentorial GBM resection is largely limited to small retrospective studies. Within these studies, AC achieves both an acceptable rate of GTR and a low rate of persistent neurological deficits. To our knowledge, this is the first systematic review and meta-analysis examining the role of AC in GBM specifically. The results of this study illustrate the potential feasibility of AC for patients with supratentorial GBM in or near eloquent areas and emphasize the need for future prospective studies to better determine its efficacy and outcomes.

Supplementary Data

Supplementary data are available at *Neuro-Oncology Advances* online.

Keywords

awake craniotomy | extent of resection | glioblastoma | neurological deficit

Acknowledgments

We would like to acknowledge Richard Kielb from the Medical Library at the University of Bristol for giving us invaluable advice on our search strategy.

Funding

No financial support was used for the production of this work.

Conflict of interest statement. The authors declare no conflicts of interest.

Authorship statement. Study conception and design: J.J.Y.Z. and G.Z. Acquisition of data: J.J.Y.Z., K.S.L., and M.R.V. Analysis and interpretation of data: J.J.Y.Z., K.S.L., M.R.V., S.L.H., M.S.B., and G.Z. Manuscript writing: J.J.Y.Z., K.S.L., M.R.V., S.L.H., M.S.B., and G.Z. Reviewed and approved the final version of the manuscript: J.J.Y.Z., K.S.L., M.R.V., S.L.H., M.S.B., and G.Z. Study supervision: G.Z. There are no unpublished papers cited in this manuscript.

References

- Ostrom QT, Cioffi G, Gittleman H, et al. CBTRUS statistical report: primary brain and other central nervous system tumors diagnosed in the United States in 2012–2016. *Neuro Oncol.* 2019;21(Suppl. 5):v1–v100.
- Sanai N, Polley MY, McDermott MW, Parsa AT, Berger MS. An extent of resection threshold for newly diagnosed glioblastomas. *J Neurosurg.* 2011;115(1):3–8.
- Laws ER, Parney IF, Huang W, et al. Survival following surgery and prognostic factors for recently diagnosed malignant glioma: data from the Glioma Outcomes Project. *J Neurosurg.* 2003;99(3):467–473.
- Lacroix M, Abi-Said D, Fourney DR, et al. A multivariate analysis of 416 patients with glioblastoma multiforme: prognosis, extent of resection, and survival. *J Neurosurg.* 2001;95(2):190–198.
- Wen PY, Kesari S. Malignant gliomas in adults. *N Engl J Med.* 2008;359(5):492–507.
- Stupp R, Mason WP, van den Bent MJ, et al. Radiotherapy plus concomitant and adjuvant temozolomide for glioblastoma. *N Engl J Med.* 2005;352(10):987–996.
- Behin A, Hoang-Xuan K, Carpentier AF, Delattre JY. Primary brain tumours in adults. *Lancet.* 2003;361(9354):323–331.
- Chaichana KL, Jusue-Torres I, Lemos AM, et al. The butterfly effect on glioblastoma: is volumetric extent of resection more effective than biopsy for these tumors? *J Neurooncol.* 2014;120(3):625–634.
- Chaichana KL, Jusue-Torres I, Navarro-Ramirez R, et al. Establishing percent resection and residual volume thresholds affecting survival and recurrence for patients with newly diagnosed intracranial glioblastoma. *Neuro Oncol.* 2014;16(1):113–122.
- Senft C, Bink A, Franz K, Vatter H, Gasser T, Seifert V. Intraoperative MRI guidance and extent of resection in glioma surgery: a randomised, controlled trial. *Lancet Oncol.* 2011;12(11):997–1003.
- Black PM, Ronner SF. Cortical mapping for defining the limits of tumor resection. *Neurosurgery.* 1987;20(6):914–919.
- Brown TJ, Brennan MC, Li M, et al. Association of the extent of resection with survival in glioblastoma: a systematic review and meta-analysis. *JAMA Oncol.* 2016;2(11):1460–1469.
- Gupta DK, Chandra PS, Ojha BK, Sharma BS, Mahapatra AK, Mehta VS. Awake craniotomy versus surgery under general anesthesia for resection of intrinsic lesions of eloquent cortex—a prospective randomised study. *Clin Neurol Neurosurg.* 2007;109(4):335–343.
- Sacko O, Lauwers-Cances V, Brauge D, Sesay M, Brenner A, Roux FE. Awake craniotomy vs surgery under general anesthesia for resection of supratentorial lesions. *Neurosurgery.* 2011;68(5):1192–1198; discussion 1198.
- Peruzzi P, Bergese SD, Viloria A, Puente EG, Abdel-Rasoul M, Chioccia EA. A retrospective cohort-matched comparison of conscious sedation versus general anesthesia for supratentorial glioma resection. Clinical article. *J Neurosurg.* 2011;114(3):633–639.
- De Witt Hamer PC, Robles SG, Zwinderman AH, Duffau H, Berger MS. Impact of intraoperative stimulation brain mapping on glioma surgery outcome: a meta-analysis. *J Clin Oncol.* 2012;30(20):2559–2565.
- Gerritsen JKW, Arends L, Klimek M, Dirven CMF, Vincent AJE. Impact of intraoperative stimulation mapping on high-grade glioma surgery outcome: a meta-analysis. *Acta Neurochir (Wien).* 2019;161(1):99–107.
- Moher D, Liberati A, Tetzlaff J, Altman DG; PRISMA Group. Preferred reporting items for systematic reviews and meta-analyses: the PRISMA statement. *PLoS Med.* 2009;6(7):e1000097.
- Cohen J. A coefficient of agreement for nominal scales. *Educ Psychol Meas.* 1960;20(1):37–47.
- Grainge M. Excluding small studies from a systematic review or meta-analysis. Presented at CSG Annual Meeting 2015; March 12–18; 2015; Dresden, Germany. https://skin.cochrane.org/sites/skin.cochrane.org/files/public/uploads/CSG-COUSIN_March%202015_M%20Grainge.pdf. Accessed February 1, 2020.
- Saad AF, Rahman M, Maybauer DM, et al. Extracorporeal membrane oxygenation in pregnant and postpartum women with H1N1-related acute respiratory distress syndrome: a systematic review and meta-analysis. *Obstet Gynecol.* 2016;127(2):241–247.
- Zhang JJY, Ong JA, Syn NL, et al. Extracorporeal membrane oxygenation in pregnant and postpartum women: a systematic review and meta-regression analysis. *J Intens Care Med.* 2019;885066619892826.
- Borenstein M, Hedges LV, Higgins JP, Rothstein HR. A basic introduction to fixed-effect and random-effects models for meta-analysis. *Res Synth Methods.* 2010;1(2):97–111.
- Nyaga VN, Arbyn M, Aerts M. Metaprop: a stata command to perform meta-analysis of binomial data. *Arch Public Health.* 2014;72(1):39.
- Higgins JPT GS. *Cochrane Handbook for Systematic Reviews of Interventions Version 5.1.0.* London, UK: The Cochrane Collaboration; 2011.
- Higgins JP, Thompson SG, Deeks JJ, Altman DG. Measuring inconsistency in meta-analyses. *BMJ.* 2003;327(7414):557–560.
- Wan X, Wang W, Liu J, Tong T. Estimating the sample mean and standard deviation from the sample size, median, range and/or interquartile range. *BMC Med Res Methodol.* 2014;14:135.
- Sterne JA, Sutton AJ, Ioannidis JP, et al. Recommendations for examining and interpreting funnel plot asymmetry in meta-analyses of randomised controlled trials. *BMJ.* 2011;343:d4002.
- Egger M, Davey Smith G, Schneider M, Minder C. Bias in meta-analysis detected by a simple, graphical test. *BMJ.* 1997;315(7109):629–634.
- Duval S, Tweedie R. Trim and fill: a simple funnel-plot-based method of testing and adjusting for publication bias in meta-analysis. *Biometrics.* 2000;56(2):455–463.
- Briggs RG, Nix CE, Conner AK, et al. An awake contralateral, transcallosal approach for deep-seated gliomas of the Basal Ganglia. *World Neurosurg.* 2019;130:e880–e887.
- Frati A, Pesce A, Palmieri M, et al. Hypnosis-aided awake surgery for the management of intrinsic brain tumors versus standard

- awake-asleep-awake protocol: a preliminary, promising experience. *World Neurosurg.* 2019;121:e882–e891.
33. Gerritsen JKW, Viëtor CL, Rizopoulos D, et al. Awake craniotomy versus craniotomy under general anesthesia without surgery adjuncts for supratentorial glioblastoma in eloquent areas: a retrospective matched case-control study. *Acta Neurochir (Wien).* 2019;161(2):307–315.
 34. Nakajima R, Kinoshita M, Okita H, Yahata T, Nakada M. Awake surgery for glioblastoma can preserve independence level, but is dependent on age and the preoperative condition. *J Neurooncol.* 2019;144(1):155–163.
 35. Pichierri A, Bradley M, Iyer V. Intraoperative magnetic resonance imaging-guided Glioma resections in awake or asleep settings and feasibility in the context of a public health system. *World Neurosurg X.* 2019;3:100022.
 36. Gravesteyn BY, Keizer ME, Vincent AJPE, Schouten JW, Stolker RJ, Klimek M. Awake craniotomy versus craniotomy under general anesthesia for the surgical treatment of insular glioma: choices and outcomes. *Neurol Res.* 2018;40(2):87–96.
 37. Khan SA, Nathani KR, Ujjan BU, Barakzai MD, Enam SA, Shafiq F. Awake craniotomy for brain tumours in Pakistan: an initial case series from a developing country. *J Pak Med Assoc.* 2016;66(Suppl. 3)(10):S68–S71.
 38. Mathias RN, de Aguiar PH, da Luz Oliveira EP, et al. “Next Door” intraoperative magnetic resonance imaging for awake craniotomy: preliminary experience and technical note. *Surg Neurol Int.* 2016;7(Suppl. 40):S1021–S1027.
 39. Mandonnet E, De Witt Hamer P, Poisson I, et al. Initial experience using awake surgery for glioma: oncological, functional, and employment outcomes in a consecutive series of 25 cases. *Neurosurgery.* 2015;76(4):382–389; discussion 389.
 40. Vassal F, Schneider F, Sontheimer A, Lemaire JJ, Nuti C. Intraoperative visualisation of language fascicles by diffusion tensor imaging-based tractography in glioma surgery. *Acta Neurochir (Wien).* 2013;155(3):437–448.
 41. Shinoura N, Yamada R, Tabei Y, et al. Left or right temporal lesion might induce aggression or escape during awake surgery, respectively: role of the amygdala. *Acta Neuropsychiatr.* 2011;23(3):119–124.
 42. Kim SS, McCutcheon IE, Suki D, et al. Awake craniotomy for brain tumors near eloquent cortex: correlation of intraoperative cortical mapping with neurological outcomes in 309 consecutive patients. *Neurosurgery.* 2009;64(5):836–845; discussion 345.
 43. Low D, Ng I, Ng WH. Awake craniotomy under local anaesthesia and monitored conscious sedation for resection of brain tumours in eloquent cortex—outcomes in 20 patients. *Ann Acad Med Singapore.* 2007;36(5):326–331.
 44. Meyer FB, Bates LM, Goerss SJ, et al. Awake craniotomy for aggressive resection of primary gliomas located in eloquent brain. *Mayo Clin Proc.* 2001;76(7):677–687.
 45. Rasmussen M, Bundgaard H, Cold GE. Craniotomy for supratentorial brain tumors: risk factors for brain swelling after opening the dura mater. *J Neurosurg.* 2004;101(4):621–626.
 46. Berger MS, Kincaid J, Ojemann GA, Lettich E. Brain mapping techniques to maximize resection, safety, and seizure control in children with brain tumors. *Neurosurgery.* 1989;25(5):786–792.
 47. Ojemann GA. Individual variability in cortical localization of language. *J Neurosurg.* 1979;50(2):164–169.
 48. Duffau H, Peggy Gagnol ST, Mandonnet E, Capelle L, Taillandier L. Intraoperative subcortical stimulation mapping of language pathways in a consecutive series of 115 patients with grade II glioma in the left dominant hemisphere. *J Neurosurg.* 2008;109(3):461–471.
 49. Parmar H, Sitoh YY, Yeo TT. Combined magnetic resonance tractography and functional magnetic resonance imaging in evaluation of brain tumors involving the motor system. *J Comput Assist Tomogr.* 2004;28(4):551–556.
 50. Witwer BP, Moftakhar R, Hasan KM, et al. Diffusion-tensor imaging of white matter tracts in patients with cerebral neoplasm. *J Neurosurg.* 2002;97(3):568–575.
 51. Clark CA, Barrick TR, Murphy MM, Bell BA. White matter fiber tracking in patients with space-occupying lesions of the brain: a new technique for neurosurgical planning? *Neuroimage.* 2003;20(3):1601–1608.
 52. Keles GE, Lundin DA, Lamborn KR, Chang EF, Ojemann G, Berger MS. Intraoperative subcortical stimulation mapping for hemispherical perirolandic gliomas located within or adjacent to the descending motor pathways: evaluation of morbidity and assessment of functional outcome in 294 patients. *J Neurosurg.* 2004;100(3):369–375.
 53. Bello L, Gallucci M, Fava M, et al. Intraoperative subcortical language tract mapping guides surgical removal of gliomas involving speech areas. *Neurosurgery.* 2007;60(1):67–80; discussion 80.
 54. Duffau H, Capelle L, Sichez N, et al. Intraoperative mapping of the subcortical language pathways using direct stimulations. An anatomofunctional study. *Brain.* 2002;125(Pt 1):199–214.
 55. Haglund MM, Berger MS, Shamseldin M, Lettich E, Ojemann GA. Cortical localization of temporal lobe language sites in patients with gliomas. *Neurosurgery.* 1994;34(4):567–576; discussion 576.
 56. Gil-Robles S, Duffau H. Surgical management of World Health Organization Grade II gliomas in eloquent areas: the necessity of preserving a margin around functional structures. *Neurosurg Focus.* 2010;28(2):E8.
 57. Ulmer S, Braga TA, Barker FG 2nd, Lev MH, Gonzalez RG, Henson JW. Clinical and radiographic features of peritumoral infarction following resection of glioblastoma. *Neurology.* 2006;67(9):1668–1670.
 58. Smith JS, Cha S, Mayo MC, et al. Serial diffusion-weighted magnetic resonance imaging in cases of glioma: distinguishing tumor recurrence from postresection injury. *J Neurosurg.* 2005;103(3):428–438.
 59. Molinaro AM, Hervey-Jumper S, Morshed RA, et al. Association of maximal extent of resection of contrast-enhanced and non-contrast-enhanced tumor with survival within molecular subgroups of patients with newly diagnosed glioblastoma. *JAMA Oncol.* 2020;6(4):495–503. doi:10.1001/jamaoncol.2019.6143.
 60. Choi BD, Gerstner ER, Curry WT, Jr. A common rule for resection of glioblastoma in the molecular era. *JAMA Oncol.* 2020;6(4):503–504. doi:10.1001/jamaoncol.2019.6384.
 61. Al-Holou WN, Hodges TR, Everson RG, et al. Perilesional resection of glioblastoma is independently associated with improved outcomes. *Neurosurgery.* 2019;86(1):112–121.
 62. Nossek E, Matot I, Shahar T, et al. Intraoperative seizures during awake craniotomy: incidence and consequences: analysis of 477 patients. *Neurosurgery.* 2013;73(1):135–140; discussion 140.
 63. Gonen T, Grossman R, Sitt R, et al. Tumor location and IDH1 mutation may predict intraoperative seizures during awake craniotomy. *J Neurosurg.* 2014;121(5):1133–1138.
 64. Grossman R, Nossek E, Sitt R, et al. Outcome of elderly patients undergoing awake-craniotomy for tumor resection. *Ann Surg Oncol.* 2013;20(5):1722–1728.
 65. Bello L, Fava E, Casaceli G, et al. Intraoperative mapping for tumor resection. *Neuroimaging Clin N Am.* 2009;19(4):597–614.
 66. Duffau H. Awake surgery for nonlanguage mapping. *Neurosurgery.* 2010;66(3):523–528; discussion 528.
 67. Stummer W, Pichlmeier U, Meinel T, Wiestler OD, Zanella F, Reulen HJ. Fluorescence-guided surgery with 5-aminolevulinic acid for resection of malignant glioma: a randomised controlled multicentre phase III trial. *Lancet Oncol.* 2006;7(5):392–401.

68. Stummer W, Reulen HJ, Meinel T, et al. Extent of resection and survival in glioblastoma multiforme: identification of and adjustment for bias. *Neurosurgery*. 2008;62(3):564–576; discussion 564.
69. Jenkinson MD, Barone DG, Bryant A, et al. Intraoperative imaging technology to maximise extent of resection for glioma. *Cochrane Database Syst Rev*. 2018;1:CD012788.
70. Eljamel MS, Mahboob SO. The effectiveness and cost-effectiveness of intraoperative imaging in high-grade glioma resection; a comparative review of intraoperative ALA, fluorescein, ultrasound and MRI. *Photodiagnosis Photodyn Ther*. 2016;16:35–43.
71. Eseonu CI, Rincon-Torroella J, ReFaey K, et al. Awake craniotomy vs craniotomy under general anesthesia for perirolandic Gliomas: evaluating perioperative complications and extent of resection. *Neurosurgery*. 2017;81(3):481–489.
72. Suarez-Meade P, Marengo-Hillebrand L, Prevatt C, et al. Awake vs. asleep motor mapping for glioma resection: a systematic review and meta-analysis. *Acta Neurochir (Wien)*. 2020;162(7):1709–1720.
73. Gerritsen JKW, Klimek M, Dirven CMF, et al. The SAFE-trial: safe surgery for glioblastoma multiforme: awake craniotomy versus surgery under general anesthesia. Study protocol for a multicenter prospective randomized controlled trial. *Contemp Clin Trials*. 2020;88:105876.