

Off-the-shelf, Steroid Resistant, IL13R α 2-Specific CAR T Cells for Treatment of Glioblastoma

Christine E. Brown¹, Analiz Rodriguez², Joycelyne Palmer⁴, Julie R. Ostberg¹, Araceli Naranjo¹, Jamie Wagner¹, Brenda Aguilar¹, Renate Starr¹, Lihong Weng¹, Timothy W. Synold³, Vivi Tran³, Shelley Wang⁷, Andreas Reik⁷, Massimo D'Apuzzo⁵, Julie A. Ressler⁶, Yuanyue Zhou⁷, Matthew Mendel⁷, Philip D. Gregory⁷, Michael C. Holmes⁷, Winson W. Tang⁷, Stephen J. Forman¹, Michael C. Jensen⁸, Behnam Badie²

Departments of ¹Hematology & Hematopoietic Cell Transplantation (T Cell Therapeutics Research Laboratories), ²Neurosurgery, ³Cancer Biology, ⁴Computational and Quantitative Medicine, ⁵Pathology, or ⁶Diagnostic Radiology, City of Hope Beckman Research Institute and Medical Center; Duarte, CA 91010.

⁷Sangamo Therapeutics, Inc.; Richmond, CA 94804

⁸Ben Town Center for Childhood Cancer, Seattle Children's Research Institute; Seattle, WA 98195.

Corresponding author: Dr. Badie at the City of Hope Beckman Research Institute and Medical Center, 1500 East Duarte Rd., Rm 1201 Pavilion Bldg., Duarte, CA 91010-3000 telephone: 626-218-7285; FAX: (626) 471-7344; Email: bbadie@coh.org.

Accepted Manuscript

Funding: This work was supported by the National Institutes of Health's National Cancer Institute grants R01CA155769 (BB), R01CA236500 (CEB), and R01CA254271 (BB, CEB); the Liam McGee Brain Tumor Fund (BB); and the California Institute of Regenerative Medicine grant CLIN2-10248 (CEB). Research reported in this article included work in the GMP Manufacturing, Pathology Research Services and Analytical Pharmacology Cores, which were supported by National Cancer Institute grant P30CA033572.

Conflict of Interest: AR, YZ and MM are current employees of Sangamo Therapeutics, Inc. SW, PDG, MCH and WWT were employed by Sangamo Therapeutics, Inc. when this work was conducted. SJF and CEB received royalty payments from Mustang Bio. CEB received royalty payments and research support from Chimeric Therapeutics. No other disclosures were reported.

Author contributions:

Conceptualization: PDG, MCH, MCJ, BB

Methodology: CEB, JP, TS, ARe, MCJ, BB

Investigation: CEB, ARo, JP, AN, JW, BA, RS, LW, VT, SW, MDA, JAR, YZ, MM, WWT

Visualization: ARo, JRO,

Funding acquisition: CEB, SJF, MCJ, BB

Supervision: CEB, ARe, PDG, MCH, SJF, MCJ, BB

Writing – original draft: ARo, JP, JRO

Writing – review & editing: CEB, JP, JRO, MDA, BB

Accepted Manuscript

Abstract:*Background:* Wide-spread application of chimeric antigen receptor (CAR) T cell therapy for cancer is limited by the current use of autologous CAR T cells necessitating the manufacture of individualized therapeutic products for each patient. To address this challenge, we have generated an off-the-shelf, allogeneic CAR T cell product for the treatment of glioblastoma (GBM), and present here the feasibility, safety and therapeutic potential of this approach.

Methods: We generated for clinical use a healthy-donor derived IL13R α 2-targeted CAR+ (IL13-zetakine+) cytolytic T-lymphocyte (CTL) product genetically engineered using zinc finger nucleases (ZFNs) to permanently disrupt the glucocorticoid receptor (GR) (GRm13Z40-2) and endow resistance to glucocorticoid treatment. In a phase I safety and feasibility trial we evaluated these allogeneic GRm13Z40-2 T cells in combination with intracranial administration of recombinant human IL-2 (rhIL-2; aldesleukin) in six patients with unresectable recurrent GBM that were maintained on systemic dexamethasone (4-12 mg/day).

Results: The GRm13Z40-2 product displayed dexamethasone-resistant effector activity without evidence for in vitro alloreactivity. Intracranial administration of GRm13Z40-2 in four doses of 10^8 cells over a two-week period with aldesleukin (9 infusions ranging from 2500 – 5000 IU) was well tolerated, with indications of transient tumor reduction and/or tumor necrosis at the site of T cell infusion in four of the six treated research subjects. Antibody reactivity against GRm13Z40-2 cells was detected in the serum of only one of the four tested subjects.

Conclusions: This first-in-human experience establishes a foundation for future adoptive therapy studies using off-the-shelf, zinc-finger modified and/or glucocorticoid resistant CAR T cells.

Key Words: IL13R α 2-CAR T cells, allogeneic, off-the-shelf, glioblastoma, glucocorticoid receptor

Accepted Manuscript

Key points:

- CAR T cells were engineered for steroid-resistance via glucocorticoid receptor knockout.
- Intracranially infused allogeneic CAR T cells were well tolerated in GBM patients.
- Transient anti-tumor effects support future advancement of off-the-shelf strategies.

Accepted Manuscript

Importance of the Study:

This is a first-in-human study of locally administered, glucocorticoid resistant, allogeneic CAR T cells for the treatment of recurrent GBM as an off-the-shelf therapy. The efficiency and specificity of zinc finger nuclease-directed disruption of the glucocorticoid receptor (GR) locus enabled the engineering of dexamethasone-resistant IL13R α 2-targeted CAR T cells. These steroid-resistant CAR T cells retained effector function in the presence of dexamethasone, which was used clinically to attenuate tumor-related neuro-edema, as well as the rejection of the therapeutic allogeneic cells. The CAR T cell product displayed a defined TCR profile without evidence of graft-versus-host alloreactivity. This study demonstrates the safety and feasibility of such gene-modified cells for use as an off-the-shelf allogeneic CAR T cell product. Evidence of transient anti-tumor effects in four of the six treated GBM patients further sets the stage for future adoptive therapy studies using off-the-shelf, glucocorticoid resistant CAR T cells for the treatment of brain tumors.

Accepted Manuscript

INTRODUCTION

Chimeric antigen receptor (CAR) T cells therapy has led to remarkable clinical responses in cancer patients¹⁻³, but its wide-spread application is limited by the current use of autologous CAR T cells requiring the manufacture of a new therapeutic product for each patient. While the development of allogeneic off-the-shelf CAR T cell therapy is an active area of investigation (reviewed in^{4,5}), several challenges remain, including the avoidance of both graft-versus-host responses as well as immunologic rejection of the product (i.e., host-vs-graft responses). To address these challenges, we developed an allogeneic CAR T cell product for the treatment of glioblastoma (GBM) that was 1) oligoclonal without evidence of alloreactivity; and 2) engineered for glucocorticoid resistance to improve the function of the therapeutic cells in the presence of dexamethasone, commonly prescribed to control cerebral edema in GBM⁶ and used here to also reduce immune rejection of the allogeneic cells.

Prior clinical experience treating three GBM patients with an autologous first-generation 'IL13-zetakine' CAR T cell therapy demonstrated safety, feasibility and evidence for transient anti-tumor responses⁷. Building on this experience, herein we report the clinical evaluation of an allogeneic CAR T cell therapy for GBM, using bi-allelic inactivation of the glucocorticoid receptor (GR) gene via zinc finger nuclease (ZFN) targeting in IL13-zetakine+ CD8+ cytolytic T-lymphocytes (CTLs). These functionally GR-negative IL13-zetakine+ CTLs maintained their cytolytic function against GBM cells and did not show allogeneic cross-reactivity against targets generated from multiple different donors. Based on these pre-clinical results, a first-in-human study was then conducted in which the GR-negative IL13-zetakine+ CD8+ alloclone T cell product, GRm13Z40-2, was administered intratumorally to six patients with nonresectable recurrent GBM who were receiving dexamethasone for recurrent GBM. This study is the first to demonstrate the safety and bioactivity of a ZFN-modified, allogeneic off-the-shelf CAR CTL product for the treatment of a solid tumor.

Accepted Article

MATERIALS AND METHODS

Study Design

This phase 1, open-label, uncontrolled study of patients with recurrent GBM was conducted at the City of Hope National Medical Center from March 2011 to March 2013 (NCT#01082926). The primary objective of the study was to assess the safety and tolerability of the intratumoral administration of GRm13Z40-2 cells in combination with aldesleukin. Secondary objectives included tracking the modified cells by 9-(4-fluoro-3-hydroxy-methyl-butyl) guanine (^{18}F HBG) positron emission tomography (PET) as reported in ⁸.

Subjects were eligible for enrollment if they were 18 to 70 years of age with progressive/recurrent grade III or IV malignant glioma expressing IL13R α 2 and required ongoing dexamethasone therapy. IL13R α 2 expression was determined by immunohistochemistry on the most recent tumor resection tissue available prior to enrollment. The Karnofsky Performance Score (KPS) was required to be ≥ 50 with adequate renal (creatinine < 1.6 mg/dL), liver (bilirubin < 1.5 mg/dL; AST and ALT $< 2X$ upper limits of normal) and bone marrow function (WBC > 2000 /dL and platelets $> 100,000$ /dL). The key exclusion criteria were expected survival < 4 weeks and tumors requiring decompressive craniotomy, and location of the tumor in the basal ganglia or thalamus or significant involvement of midbrain, pons, and medulla. Subjects with pulmonary (supplemental oxygen), cardiac (arrhythmia, hypotension), and neurologic disease (refractory seizure, progressive encephalopathy) were also excluded. The final protocol, amendments, and consent documents were reviewed and approved by the Institutional Review Board and Independent Ethics Committee at The City of Hope National Medical Center as well as the Recombinant DNA Advisory Committee of the National Institute of Health. All subjects provided written informed consent.

Six subjects were enrolled, assigned a unique patient number (UPN), and underwent a stereotactic biopsy to confirm GBM recurrence followed by placement of a Rickham catheter in or proximal to the MRI-defined tumor site. GRm13Z40-2 cells (10^8 cells per infusion) were infused locally into the tumor via the Rickham catheter on days 1, 3, 8 and 10, and aldesleukin was infused locally into the tumor via the Rickham catheter over a 3-hour period (0.5 mL/hr) on days 2, 3, 4, 5, 8, 9, 10, 11 and 12. For UPNs 100 and 102, the cells were infused over a two-hour period; however, due to cell aggregation in the tubing, the protocol was amended to manually inject the cells over a 10-min period for all subsequent participants. On the morning of each T cell infusion, the GRm13Z40-2 cells were thawed, washed and reformulated in 0.5 mL preservative free normal saline (PFNS)/2% human serum albumin (HSA) and delivered manually (~ 10 min) using a syringe to inject into the Rickham catheter. This was followed by a 1.0 mL PFNS flush by convection enhanced delivery (CED at 0.5 mL/hr; day 1), or followed by 1.5 mL PFNS/2% HSA containing aldesleukin by CED and then the 1.0 mL PFNS flush (both at 0.5 mL/hr; days 3, 8, and 10). The intracranial dose of aldesleukin (Chiron) was 2500 IU on days 2-5 and 5000 IU on days 8-12. Subjects underwent MRI, ^{18}F HBG PET, and ^{18}F FDG PET at baseline with additional MRIs at the end of week 1 and at weeks 4 and 8. The ^{18}F HBG PET was repeated at week 3, and the ^{18}F FDG PET was repeated at weeks 4 and 8.

Generation of GRm13Z40-2

Peripheral blood mononuclear cells (PBMC) derived from a healthy male volunteer donor apheresis unit were subjected to electrotransfer of the IL13-zetakine CAR-containing plasmid vector followed by activation with 30 ng/mL monoclonal OKT3 (Janssen Biotech, Inc.) and selection with 0.2 mg/mL hygromycin (InvivoGen) as previously described^{7,9}. Briefly, a rapid expansion method (REM) was carried out by 14-day cycles of coculture with OKT3, 50 U/mL rhIL-2 (Chiron), 10⁶/mL allogeneic irradiated (3300 rads) PBMC, and 2x10⁵ allogeneic irradiated (5000 rads) lymphoblastic cell lines (LCL¹⁰). T cells were then subjected to transfection with the Ad5/F35 vector SB-313 containing the GR-specific ZFN open reading frames, followed by selection in 10⁻⁴ M Dexamethasone and further REM prior to cryopreservation of both a master cell bank and clinical batches.

Serum antibody response assay

Heat inactivated serum samples were incubated at a 1:10 dilution with 7.5 x 10⁴ GRm13Z40-2 cells in 50µL FCS buffer (PBS with 5% BSA and sodium azide) for 20 minutes at 4°C in a 96-well round-bottom plate. The cells were then washed with FCS buffer twice prior to incubation with a 1:50 dilution of FITC-conjugated goat anti-human IgG Fcγ (Jackson ImmunoResearch) for 20 minutes at 4°C in the dark. Cells were washed again and resuspended in 300 µL FCS buffer prior to data acquisition on a Guava easyCyte 5HT (Millipore Sigma) and analysis with FCS Express V3 Software.

Other Materials and Methods may be found in the Supplemental Material.

Accepted Manuscript

RESULTS

Generation of allogeneic IL13-zetakine+ CTL product with ZFN-targeted disruption of the GR locus

From a healthy male donor, leukapheresis was performed to isolate peripheral blood mononuclear cells and, following OKT3 T cell activation, the cells were electroporated with plasmid (**Fig. 1A**) that would confer expression of the first-generation IL13-zetakine CAR, consisting of an IL13(E12Y) mutein for IL13R α 2-targeting (**Fig. 1B**) as previously described⁷. Subsequently, cells were transduced with the Ad5/F35 vector SB-313 containing the two GR-specific ZFN open reading frames (ZFN9674 and ZFN9666) (**Fig. 1C**) that knock out GR by cleaving the locus at a site within the N-terminal domain (**Fig. 1D**). Cells were then selected for glucocorticoid resistance by the addition of 10⁻⁴ M dexamethasone. This cell population (clinical product GRm13Z40-2) was then further expanded by rapid expansion method (REM), prior to cryopreservation (**Fig. 1E**). Flow cytometric analysis of the T cell product revealed that it was IL13-zetakine+, CD8+, and oligoclonal, with TCR V β analysis revealing that the cells predominantly expressed V β 9 (**Fig. 1F**).

The success of the SB-313 mediated GR-modification was confirmed by incubation of GR locus PCR products from GRm13Z40-2 cells with the Cel-1 mismatch specific nuclease (**Fig. 1G**). In a similar assay, the specificity of the SB-313 ZFNs for the GR locus was supported by the lack of cleavage in the PCR amplified sequences of 15 predicted off-target sites (**Fig. S1**). Furthermore, after stimulation with dexamethasone for 20 hours, both induction of the glucocorticoid-induced gene FKBP5 and inhibition of the glucocorticoid-repressed gene IFN- γ were observed to be decreased and/or absent in the SB-313 transduced cells (i.e., GRm13Z40-2 cells) compared to parental controls (**Fig. 1H**). To ensure that GR-modification of the IL13-zetakine+ CTLs did not affect their ability to target and kill IL13R α 2-expressing tumor targets, chromium release assays were performed and showed that GRm13Z40-2 cells exhibited IL13R α 2-targeted cytolytic activity against a panel of tumor cell lines (**Fig. 1I**) that was equivalent to that seen with non GR-modified IL13-zetakine+ CTL controls. The GRm13Z40-2 master cell bank was determined to be stable with regards to viability, expression of TCR $\alpha\beta$ and CD8/CD3, as well as IL13R α 2-targeted cytolytic activity for up to 3.5 years (**Table S1**).

GRm13Z40-2 lack alloreactivity

A primary challenge of an allogeneic CAR T cell platform is the risk of graft versus host disease (GVHD) due to mis-matched human leukocyte antigen (HLA). To evaluate the potential alloreactivity of the oligoclonal GRm13Z40-2 cell product, a panel of EBV-transformed lymphoblastic cell lines (LCL) generated from healthy donors of different HLA subtypes were used as targets in a chromium release assay. Regardless of the HLA A1, A2, B1 or B2 subtype expressed by the target cells, the GRm13Z40-2 effectors lacked reactivity except against positive control targets expressing the CD3-agonist OKT3 (**Fig. 2**). The lack of alloreactivity in this preclinical assay supported the potential safety of this GR-modified, IL13-zetakine+ CTL line.

Patient Characteristics and Treatment Overview

Allogeneic GRm13Z40-2 cells were administered to 6 subjects with unresectable recurrent GBM, as an off-the-shelf therapy, in a single center, open label, uncontrolled study (**Table 1**). All of the subjects were Caucasian and had a mean (+SD) age of 56.2+10.7 years (range: 36-66 years). The mean (+SD) duration since histological diagnosis of GBM to enrollment on this trial was 24+27.3 months (range: 5.8-79 months). Four of the six subjects had undergone

at least one surgical resection, with two of them having had 3 resections. All of the subjects had received prior temozolomide and radiotherapy. The Karnofsky Performance Score of the subjects at enrollment ranged from 60 to 80 (**Table 1**).

After placement of a Rickham catheter in or proximal to the MRI-defined tumor site, GRm13Z40-2 cells (4 infusions of 10^8 cells) and IL-2 (aldesleukin; 9 infusions ranging from 2500 – 5000 IU) were locally infused via the catheter over a two week period (**Fig. 3A**). All patients were on a daily dexamethasone dose of ≥ 4 mg. (**Table 1**). While prior documented IL13R α 2 expression on archival tissue was an enrollment criterion, intermediate IL13R α 2 expression was also detected in the recurrent GBM of all patients (**Fig. 3B**; i.e., biopsies from each patient exhibited an H score of 100 or greater using a formula modified from¹¹).

Safety of GRm13z40-2 administration

All research subjects received the entire 2-week treatment cycle without any dose limiting toxicities (**Table 1**). All adverse events (AEs) considered at least possibly related to GRm13Z40-2 cells and/or IL-2 treatment were \leq grade 3, with no AEs considered probably related to the treatment, and only one grade 1 injection site reaction (UPN 100) and one grade 1 fever (UPN 104) considered definitely related to the treatment (**Table S2**). The most common AEs that were possibly related to the treatment included fatigue (UPNs 100, 103, 104, 106), confusion (UPNs 100, 104, 105), sinus tachycardia (UPNs 100, 105, 106) and headache (UPNs 100, 102, 103, 105, 106). One patient, UPN 100, experienced the most AEs that were possibly related to the treatment, including a stroke distant from the T cell injection site nearly two weeks after the final infusion; however, the stroke was considered probably related to dehydration. Overall, an acceptable safety profile was observed in all 6 patients and all treatment-related AEs were transient and/or manageable.

Evidence of transient antitumor bioactivity following GRm13z40-2 administration

Serial radiographic imaging with magnetic resonance imaging (MRI) and positron emission tomography (PET) was conducted to evaluate for tumor regression (**Fig.s 4, 5A, S2A and S3**). Two research subjects (UPNs 100 and 104) had radiographic evidence of enhanced tumor necrosis at 4 weeks at the site of GRm13Z40-2 cell administration as detected by MRI and 18F-fluorodeoxyglucose (FDG) PET imaging (**Table 1 and Fig. 4**). Furthermore, two patients (UPNs 103 and 106) who underwent a subsequent craniotomy for symptomatic tumor progression and lacked evidence of anti-tumor responses on post therapy images (**Fig.s 5A and S2A**), had histological features suggestive of local treatment responses near the site of catheter placement as indicated by large areas of confluent coagulative necrosis observed exclusively in proximity to the T cell infusion site (**Fig.s 5B and S2D**). Further immunohistochemical analysis of the pathology specimens from these two patients (UPNs 103 and 106) revealed maintenance of IL13R α 2 expression (**Fig.s 5B and S2B**), as well as the presence of CD8+ T cells in the tumor microenvironment (**Fig.s 5C and S2C**), which appeared higher at the injection site vs. a more distal tumor biopsy site that was collected from UPN 103 (**Fig. 5C**). However, using fluorescence in situ hybridization (FISH) with an XY probe to determine the genotype of the CD8+ cells in female patient UPN 103 (**Fig. 5D**), only two CD8+ male cells were identified in the injection site sample (117 fields evaluated), and one CD8+ male cell was identified in the distal site sample (124 fields evaluated), suggesting that only a few injected GRm13Z40-2 cells had persisted 10 weeks after the final T cell infusion.

The median survival of the research participants treated on this study was 2.9 months after T cell therapy with the longest survival being 11.3 months in a patient (UPN 105) who did not

have radiographic evidence of response (**Table 1**). Overall mean survival from initial GBM diagnosis was 29 months, with a range of 8.6 to 82 months, for this patient cohort. In summary, while evidence of antitumor bioactivity following CAR T cell and adoleuskin therapy was observed, no objective clinical responses or significant survival benefit could be documented in this patient population with advanced GBM.

Assessment of anti-GRm13Z40-2 humoral responses

To assess the induction of host immune responses against the allogeneic cells, antibody response assays were carried out with the serum collected from four patients (**Tables 1 and S3**). Antibody reactivity against the surface expressed CAR transgene using a flow cytometry-based assay was observed in only one of the four tested participants. This response detected in UPN 103 started at week 3 (i.e., the week after completion of all four GRm13Z40-2 administration cycles), and while it did not coincide with any adverse events of grade 3 or higher, it does suggest that in some cases an immune rejection response may be mounted by patients. However, this patient also received the lowest dose of dexamethasone (i.e., 4 mg/day), so it may be possible that a higher dose of dexamethasone would have prevented this immune rejection.

Accepted Manuscript

DISCUSSION

GBM and other brain tumors are an attractive clinical setting for the application of CAR T cell therapy^{12,13}. For many patients with malignant brain tumors, clinical urgency limits patients from waiting for a new therapy such as the time needed to engineer an autologous cell-based therapy. Moreover, the immune-privileged nature of the central nervous system (CNS) may provide a particularly attractive clinical setting in which to test allogeneic CAR T cell products. Foundational studies reveal that immune rejection of allografts occurs more slowly in the CNS versus periphery¹⁴, a feature that may provide a window of opportunity for off-the-shelf therapies for malignant brain tumors. To further protect against immune rejection of the allogeneic CAR T cell product, we took advantage of the immunosuppressive effects of the glucocorticoid dexamethasone, which is a standard adjuvant treatment used to mitigate cerebral edema in brain tumor patients and documented to suppress immune responses in brain tumors^{15,16}. Although attractive as an approach, clinical validation for safety and feasibility of an allogeneic CAR T cell off-the-shelf approach has not previously been reported in the setting of malignant brain tumors. Here we present the first-in-human evaluation of a locally administered, glucocorticoid resistant, allogeneic CAR T cell product for the treatment of recurrent GBM.

To bypass glucocorticoid signaling in our engineered CTLs and bestow steroid resistant effector function, we used ZFNs to target a site in exon 3 of the GR locus to permanently disrupt expression of the full-length receptor (see Fig. 1D). ZFN-induced DNA cleavage followed by non-homologous end joining leads to the small insertion or deletion of nucleotides at the cleavage site, which will in most cases alter the reading frame to include a premature stop codon, thus generating a truncated protein variant and reduced protein levels (reviewed in¹⁷). The truncated GR protein generated by the GR ZFNs would be expected to lack the DNA binding domain, ligand binding domain, and nuclear localization signal, and therefore not possess any gene regulatory activity. Indeed, our findings support that GR-disrupted CAR T cell products do retain effector function in the presence of dexamethasone.

The use of ZFN targeted genetic modification has been investigated by others in the manufacture of T cells for adoptive transfer. The general efficiency of ZFN-mediated gene editing of CD4+ and CD8+ T cells by homology directed repair using Adeno-associated virus vector to deliver the homologous donor template has been described by Wang et al¹⁸. We considered two features of such ZFN-targeted technology to be especially useful when designing our CAR T cell product for this clinical trial. First, the endogenous GR locus sequence can be modified at a high frequency on both alleles, so that there is no residual functional GR expression and gene modification is maintained and transmitted stably. Second, ZFN expression is required only transiently, which allows expression of the ZFN from a non-integrating delivery vector (i.e., Ad5/F35) and avoids the hazards associated with vector and transgene insertion and long-term instability of transgene expression. However, other gene editing techniques that have been successfully used in the development of allogeneic CAR T cell products include transcription activator-like effector nucleases (TALENs) and the clustered regularly interspaces short palindromic repeats (CRISPR) system (reviewed in^{4,5}). Independent of the gene-editing approach employed, our study highlights the potential of GR-locus knockout for off-the-shelf CAR T cell development, and provides the first clinical proof-of-concept for its application.

Graft-versus-host (GVH) disease is a potential severe adverse complication of allogeneic CAR T cell products. In our study we avoided GVH activity by selecting for an oligoclonal T cell

population that was evaluated prior to clinical administration for its alloreactivity. GRm13Z40-2 cells did not exhibit GVH reactivity when tested against a panel of donor derived cell lines with different HLA subtypes, and while this panel was not fully comprehensive, our clinical data further supports the safety of repetitive delivery of an allogeneic CAR T cell product that was derived from healthy donor PBMC with defined TCR specificity. This safety profile was observed despite the fact that patient HLA screening (i.e., to match that of the subtypes in the test panel) was not a part of enrollment. Other cell sources actively being investigated for their utility as an off-the-shelf product with reduced risk of GVH include use of virus-specific memory T cells with restricted TCR repertoire, or non-TCR $\alpha\beta$ cells such as NK cells, NKT cells or TCR $\gamma\delta$ T cells (reviewed in ⁴). Alternatively, gene knockout of the T cell receptor alpha locus (TRAC) using CRISPR and other gene-editing technologies ^{4,19} is also a strategy to overcome the risk of GVH. Indeed, Torikai et al were the first to report the ZFN-mediated targeting of the TRAC locus as an approach to avoid GVH responses ²⁰. Use of induced pluripotent stem cells (iPSCs) is another attractive source of T cells that our group is actively investigating, as they would provide unlimited self-renewal and can be banked indefinitely ²¹. A bank of iPSCs with common HLA haplotypes might be generated to minimize the risk of allorejection, and gene editing might be used to eliminate TCR to avoid GVH reactivity.

We had conducted an earlier Phase I trial evaluating autologous cloned CD8+ CTLs, also genetically modified to express the first-generation IL13-zetakine, but with intact GR (NCT00730613) ⁷. Each of the patients treated on that trial experienced brain inflammation at the site of T cell infusion, which is in contrast to the trial reported here, where we attribute the lack of neuroinflammation to the regular administration of dexamethasone. Regardless, for both clinical protocols, CAR T cells were delivered intracranially through an implanted reservoir/catheter system that allowed repetitive dosing of the cells directly into the resected tumor cavity or the site of the tumor. No immediate or acute device-related adverse events (e.g., occlusion, malfunction, infection) were detected. Together, the safety profiles, as well as evidence of local tumor necrosis, support the strategy of targeting IL13R α 2 in the context of CAR T cell immunotherapy.

Despite the local transient activity, tumors eventually recurred in all patients, and the T cells did not persist in the tumor microenvironment. We cannot rule out allo-rejection, which might benefit from stricter patient HLA screening/selection. Further, the impact of dexamethasone on the endogenous immune system may also have played a role in limiting the therapeutic effectiveness of this strategy. We previously reported a case in which IL13R α 2-CAR T cells mediated a complete response in a patient with actively progressing recurrent multifocal GBM, and have shown that this response was associated with activation of host immunity ^{3,22,23}. Other successful adoptive T cell therapies are increasingly understood to be impacted by engagement of endogenous immune responses ²⁴⁻²⁶. Indeed, in a report by Keskin et al, vaccine-driven T cell responses were observed only in patients who did not receive dexamethasone during neoantigen priming ¹⁶. The immunosuppressive effects of the GBM microenvironment ²⁷ might also have limited the effectiveness of the therapy and combination approaches targeting the tumor microenvironment, such as combining CAR T cell therapy with checkpoint inhibition, may improve patient outcomes ²⁸.

While the trial design might be improved by addressing issues of patient selection, engagement of endogenous immunity and/or the suppressive tumor microenvironment, it must also be acknowledged that the GRm13Z40-2 cells represent first-generation CAR T cells, in which persistence has been noted to be low and has since been improved by

including costimulatory domains ²⁹. Further, it has been shown that the IgG4-Fc linker within this first-generation CAR can lead to off-target interactions with Fc gamma receptors which reduce CAR T cell persistence, and can be overcome by mutating that portion of the CAR design ³⁰. Finally, these GRm13Z40-2 cells had also undergone extensive in vitro culture and expansion, which is known to be detrimental to CAR T cell fitness ³¹. Thus, the lack of CAR T persistence in this trial is likely at least partly due to specific features of the CAR T cell product.

More recently, to improve IL13R α 2-targeted CAR T cell persistence and potency, we have both optimized the CAR to contain a 4-1BB costimulatory domain, and modified our manufacturing platform by engineering CD62L+ naïve and memory cells, and reducing the ex vivo expansion time to < 14 days (²⁹ and unpublished data). These IL13BB ζ -CAR T cells exhibit significantly improved antitumor activity and persistence compared to first-generation IL13 ζ -CAR CTL. Based on these preclinical results and the clinical safety reported for first-generation IL13R α 2-targeted CAR CTL in this study and previously ⁷, we have initiated a first-in-human clinical trial [NCT02208362] evaluating the safety, feasibility and bioactivity of weekly intracranial infusions of autologous second-generation IL13BB ζ -CAR T cells without GR disruption in patients with recurrent IL13R α 2+ high-grade glioma. While this study is ongoing, there is evidence of clinical activity in a subset of patients, including one patient that achieved a complete response ³. Together, these studies support the future development of allogeneic second-generation IL13R α 2-targeted CAR T cell products for the treatment of GBM.

Overall, we demonstrate safety and feasibility of GR-modified cells for use as an off-the-shelf allogeneic CAR T cell product. This first-in-human experience thus establishes a foundation for future adoptive therapy studies using off-the-shelf, glucocorticoid resistant CAR T cells for the treatment of brain tumors.

Accepted Manuscript

Funding: National Institutes of Health's National Cancer Institute (R01CA155769 to B.B., R01CA236500 to C.E.B., R01CA254271 to B.B. and C.E.B., P30CA033572 to GMP Manufacturing, Pathology Research Services and Analytical Pharmacology Cores); Liam McGee Brain Tumor Fund to B.B.; and California Institute of Regenerative Medicine (CLIN2-10248 to C.E.B.).

Acknowledgments: We thank Anita Kurien for regulatory support and David DiGiusto for insightful discussion in the design of this trial. In the memory of Xin (Cindy) Yang and Dale Ando, we would like to acknowledge their contributions to this research.

Accepted Manuscript

References

1. Maude SL, Laetsch TW, Buechner J, et al. Tisagenlecleucel in Children and Young Adults with B-Cell Lymphoblastic Leukemia. *N Engl J Med.* 2018; 378(5):439-448.
2. Neelapu SS, Locke FL, Bartlett NL, et al. Axicabtagene Ciloleucel CAR T-Cell Therapy in Refractory Large B-Cell Lymphoma. *N Engl J Med.* 2017; 377(26):2531-2544.
3. Brown CE, Alizadeh D, Starr R, et al. Regression of Glioblastoma after Chimeric Antigen Receptor T-Cell Therapy. *N Engl J Med.* 2016; 375(26):2561-2569.
4. Depil S, Duchateau P, Grupp SA, Mufti G, Poirot L. 'Off-the-shelf' allogeneic CAR T cells: development and challenges. *Nat Rev Drug Discov.* 2020; 19(3):185-199.
5. Morgan MA, Büning H, Sauer M, Schambach A. Use of Cell and Genome Modification Technologies to Generate Improved "Off-the-Shelf" CAR T and CAR NK Cells. *Frontiers in immunology.* 2020; 11:1965.
6. Smith LK, Cidlowski JA. Glucocorticoid-induced apoptosis of healthy and malignant lymphocytes. *Progress in brain research.* 2010; 182:1-30.
7. Brown CE, Badie B, Barish ME, et al. Bioactivity and Safety of IL13Ralpha2-Redirected Chimeric Antigen Receptor CD8+ T Cells in Patients with Recurrent Glioblastoma. *Clin Cancer Res.* 2015; 21(18):4062-4072.
8. Keu KV, Witney TH, Yaghoubi S, et al. Reporter gene imaging of targeted T cell immunotherapy in recurrent glioma. *Sci Transl Med.* 2017; 9(373).
9. Jensen MC, Clarke P, Tan G, et al. Human T lymphocyte genetic modification with naked DNA. *J Mol Ther.* 2000; 1(1):49-55.
10. Bird AG, McLachlan SM, Britton S. Cyclosporin A promotes spontaneous outgrowth in vitro of Epstein-Barr virus-induced B-cell lines. *Nature.* 1981; 289(5795):300-301.
11. Ishibashi H, Suzuki T, Suzuki S, et al. Sex steroid hormone receptors in human thymoma. *The Journal of clinical endocrinology and metabolism.* 2003; 88(5):2309-2317.
12. Akhavan D, Alizadeh D, Wang D, Weist MR, Shepphird JK, Brown CE. CAR T cells for brain tumors: Lessons learned and road ahead. *Immunol Rev.* 2019; 290(1):60-84.
13. Chuntova P, Downey KM, Hegde B, Almeida ND, Okada H. Genetically Engineered T-Cells for Malignant Glioma: Overcoming the Barriers to Effective Immunotherapy. *Frontiers in immunology.* 2018; 9:3062.
14. Medawar PB. Immunity to homologous grafted skin. III. The fate of skin homografts transplanted to the brain, to subcutaneous tissue, and to anterior chamber of the eye. *Br J Exp Pathol.* 1948; 29:58-69.
15. Iorgulescu JB, Gokhale PC, Speranza MC, et al. Concurrent Dexamethasone Limits the Clinical Benefit of Immune Checkpoint Blockade in Glioblastoma. *Clin Cancer Res.* 2021; 27(1):276-287.
16. Keskin DB, Anandappa AJ, Sun J, et al. Neoantigen vaccine generates intratumoral T cell responses in phase Ib glioblastoma trial. *Nature.* 2019; 565(7738):234-239.
17. Chang YF, Imam JS, Wilkinson MF. The nonsense-mediated decay RNA surveillance pathway. *Annu Rev Biochem.* 2007; 76:51-74.
18. Wang J, DeClercq JJ, Hayward SB, et al. Highly efficient homology-driven genome editing in human T cells by combining zinc-finger nuclease mRNA and AAV6 donor delivery. *Nucleic acids research.* 2016; 44(3):e30.
19. Stadtmayer EA, Fraietta JA, Davis MM, et al. CRISPR-engineered T cells in patients with refractory cancer. *Science.* 2020; 367(6481).
20. Torikai H, Reik A, Liu PQ, et al. A foundation for universal T-cell based immunotherapy: T cells engineered to express a CD19-specific chimeric-antigen-receptor and eliminate expression of endogenous TCR. *Blood.* 2012; 119(24):5697-5705.
21. Themeli M, Kloss CC, Ciriello G, et al. Generation of tumor-targeted human T lymphocytes from induced pluripotent stem cells for cancer therapy. *Nat Biotechnol.* 2013; 31(10):928-933.
22. Alizadeh D, Wong RA, Gholamin S, et al. IFN γ Is Critical for CAR T Cell-Mediated Myeloid Activation and Induction of Endogenous Immunity. *Cancer discovery.* 2021; 11(9):2248-2265.
23. Jonsson VD, Ng RH, Dullerud N, et al. CAR T cell therapy drives endogenous locoregional T cell dynamics in a responding patient with glioblastoma. *bioRxiv.* 2021.
24. Bachireddy P, Azizi E, Burdziak C, et al. Mapping the evolution of T cell states during response and resistance to adoptive cellular therapy. *Cell reports.* 2021; 37(6):109992.
25. Hegde M, Joseph SK, Pashankar F, et al. Tumor response and endogenous immune reactivity after administration of HER2 CAR T cells in a child with metastatic rhabdomyosarcoma. *Nature communications.* 2020; 11(1):3549.
26. Hunder NN, Wallen H, Cao J, et al. Treatment of metastatic melanoma with autologous CD4+ T cells against NY-ESO-1. *N Engl J Med.* 2008; 358(25):2698-2703.

27. Jackson C, Ruzevick J, Phallen J, Belcaid Z, Lim M. Challenges in immunotherapy presented by the glioblastoma multiforme microenvironment. *Clin Dev Immunol.* 2011; 2011:732413.
28. Kamath SD, Kumthekar PU. Immune Checkpoint Inhibitors for the Treatment of Central Nervous System (CNS) Metastatic Disease. *Frontiers in oncology.* 2018; 8:414.
29. Brown CE, Aguilar B, Starr R, et al. Optimization of IL13Ralpha2-Targeted Chimeric Antigen Receptor T Cells for Improved Anti-tumor Efficacy against Glioblastoma. *Mol Ther.* 2018; 26(1):31-44.
30. Jonnalagadda M, Mardiros A, Urak R, et al. Chimeric antigen receptors with mutated IgG4 Fc spacer avoid fc receptor binding and improve T cell persistence and antitumor efficacy. *Mol Ther.* 2015; 23(4):757-768.
31. Itzhaki O, Hovav E, Ziporen Y, et al. Establishment and large-scale expansion of minimally cultured "young" tumor infiltrating lymphocytes for adoptive transfer therapy. *J Immunother.* 2011; 34(2):212-220.

Accepted Manuscript

Figure Captions

Fig. 1. Characterization of GRm13Z40-2 cell product. (A) Schematic of the IL13-zetakine plasmid containing the hygromycin phosphotransferase-HSV thymidine kinase selection/PET reporter fusion gene (HyTK) with poly-adenosine tail (pA) under the control of the cytomegalovirus immediate-early promoter (CMVp), and the IL13-zetakine receptor gene under the control of the human elongation factor 1 α promoter (EF1p). (B) Illustration of the IL13-zetakine receptor, where the IL13R α 2-specific ligand IL13(E13Y), IgG4Fc linker (hu γ 4Fc), CD4 transmembrane domain (huCD4 tm), and CD3 ζ cytoplasmic signaling domain (huCD3 ζ cyt) are depicted. (C) Schematic of the GR-ZFN-containing Ad5/35 vector SB-313, where the inverted terminal repeats (ITR), the psi packaging sequence (ψ), the zinc finger nuclease (ZFN) expression cassette containing the CMV promoter (CMVp), the two GR-locus targeting ZFN open reading frames (ZFN9674, ZFN9666) separated by the 2A ribosomal skip sequence, and the chimeric fiber protein sequence containing the shaft and knob domain from adenovirus serotype 35 (35K) in place of that for adenovirus serotype 5 are indicated. (D) Schematic of the human glucocorticoid receptor (hGR) protein sequence, where the N-terminal domain (NTD), DNA binding domain (DBD), ligand binding domain (LBD), and SB-313 target site at amino acid 412 are indicated. (E) Diagram of the manufacturing process, with day of each step indicated. PBMC, peripheral blood mononuclear cells; OKT3, a CD3 agonistic antibody used to activate T cells; REM, rapid expansion method involving 14-day cycles of stimulation with OKT3, rhIL-2 and irradiated feeders as previously described⁹. (F) GRm13Z40-2 cells were stained with fluorochrome-conjugated reagents specific for the indicated markers (shaded histograms), with IL13-specific staining used to detect the CAR, and the IOTest[®] Beta Mark TCR V-beta Repertoire Kit used to determine TCR V β 9 predominance. Percentages of positive cells above isotype control staining (open histograms) are indicated. Isotype control staining was used to set the quadrants in right-most histogram. (G) Sequence diversity of the GR locus as determined with PCR products incubated with the Cel-1 mismatch specific nuclease, with band analysis showing a 36% frequency of GR locus modification. Depicted are parental IL13z40 cells (non-transduced with SB-313), and GRm13Z40-2 clinical product cells. M, marker lane. (H) Same cells as in (G) were either treated with 10⁻⁶ M dexamethasone (DEX) or left untreated (no DEX) for 20 hours and message RNA levels of glucocorticoid induced gene FKBP5 (left) and glucocorticoid repressed gene IFN- γ (right) were analyzed by RT-PCR. Mean \pm S.D. of 4 RT-PCR runs are depicted. *, $p \leq 0.0089$ using a paired Student's t-test; #, $p = 0.0067$ when compared to untreated cells using a paired Student's t-test. (I) GRm13z40-2 cells or control IL13z03 (non-transduced with SB-313) cells were used as effectors in a 4-hour ⁵¹Cr release assay using the indicated E:T ratios. The IL13R α 2-positive tumor targets were U87 and U251T cells, and Daudi cells engineered to express IL13R α 2 (Daudi-R α 2); the negative tumor target controls were the LCL and Daudi parental lines. Mean \pm S.E.M. of triplicate wells are depicted.

Fig. 2. GRm13z40-2 cells lack alloreactivity. Alloreactivity was tested using a 4-hour ⁵¹Cr-release assay with GRm13Z40-2 effectors against EBV-transformed lymphoblastic cell lines (LCL) generated from donors of different allogeneic HLA types (indicated in Table at right). TM-LCL-OKT3 targets expressed the CD3 agonist OKT3 and acted as a positive control.

Fig. 3. Treatment schema and target antigen expression of excised tumors. (A)

Intratumoral treatment overview for the 4 cycles of 10^8 GRm13Z40-2 cells administered twice a week, with IL-2 administered by convection-enhanced delivery (CED) on days 2-5 of week one, and days 1-5 of week 2. **(B)** Recurrent tumors of each UPN resected at time of Rickham placement underwent immunohistochemical (IHC) staining using IL13R α 2-specific DAB with hematoxylin counterstain. Scale bars indicate 100 μ m. H scores are indicated in parentheses, and were obtained by the formula: (3 x percentage of strongly staining cells) + (2 x percentage of moderately staining cells) + percentage of weakly staining cells, giving a range of 0 to 300 (Modified from ¹¹); plus signs indicate that membranous staining was observed.

Fig. 4. Imaging demonstrates increased necrosis near site of CAR T cell injection. Axial T1 with contrast MRI images show preoperative recurrent tumors extending into left splenium of UPN 100 **(A)** and into the corpus callosum of UPN 104 **(B)**, with PET imaging obtained after catheter placement demonstrating hypermetabolic tumors at each site. One month after treatment initiation ('Post Therapy' panels at right), local necrosis is noted in areas of previous MRI enhancement (white arrow heads); and PET imaging shows hypometabolic tumors, consistent with necrosis, surrounding each catheter site (white arrow heads). Mean standardized uptake values (SUVs) of tumor site normalized to background SUVs are indicated in each PET panel.

Fig. 5. Comparison of injection and distal tumor sites post therapy. (A) Axial T1 with contrast MRI images show recurrent tumor of UPN 103, with no significant radiological changes noted adjacent to catheter (red arrow head) at 3 weeks after initiation of therapy, but more heterogenous enhancement of the tumor bulk surrounding the catheter at 10 weeks after initiation of therapy (top panels). PET imaging obtained after catheter insertion (red arrow head) and at 3 and 7 weeks after initiation of therapy shows hypermetabolic tumor (bottom panels). Biopsy sites collected at 10 weeks are indicated with red outlines. Mean SUVs of tumor site normalized to background SUVs are indicated in each PET panel. **(B)** IL13R α 2 IHC and hematoxylin and eosin (HE) staining of biopsies collected at 10 weeks after initiation of therapy. H scores for IL13R α 2 staining are indicated in parentheses, and were obtained as described in Fig 3 legend. Injection site shows 40% necrosis, which is chiefly represented by large areas of confluent coagulative necrosis (dashed oval, blue box magnified in far-right panel). Distal site shows predominantly viable tissue with foci of pseudo-palisading necrosis representing 10% of the resected tissue. Red boxes outline areas of viable tumor as magnified in the subsequent panels. Scale bars indicate 2.5 mm (images at left) and 100 μ m (magnified images at right). **(C)** Tumor biopsies of injection and distal sites collected at 10 weeks after initiation of therapy were examined for the presence

of CD3+ and CD8+ T cells by IHC. Scale bars indicate 50 μm . Enumeration of CD3+ cells in the $2.5 \times 10^8 \mu\text{m}^2$ area of each biopsy IHC section is depicted at the right. **(D)** Detection of male CAR T cells in biopsies collected at 10 weeks after initiation of therapy. Upon alignment of FISH and CD8 IHC brightfield images, two CD8+ male cells (Target 52 depicted, white arrowhead; Target 110 not shown) were identified in the injection site biopsy section, and one CD8+ male cell (Target 112 depicted, white arrowhead) was identified in the distal site biopsy section. Scale bars indicate 50 μm .

Accepted Manuscript

Table 1. Patient and Outcome Summary.

UP N	Gender	Age at Enrollment (yrs)	Time from Diagnosis to Enrollment (months)	Prior Therapies	KPS at Enrollment	Dex Dose Per Day *	DLTs **	Serum Ab Response ^	Evidence for Radiographic Response	KPS at Last Contact	Survival Post Treatment (months)
100	Female	62	5.8	1 surgery -b#, RT/TMZ	60	12 mg	None	NE	Local necrosis	30	2.9
102	Male	36	79	3 surgeries -r/r/r, RT/TMZ, 4 other¥, BVZ	70	12 mg	None	NE	None	70	2.9
103	Female	52	15.9	3 surgeries -r/b/b, RT/TMZ, 1 other, BVZ	80	4 mg	None	+	None	70	6.9
104	Male	61	17.9	3 surgeries -r/r/r, RT/TMZ	80	4-6 mg §	None	-	Local necrosis	70	2.3

105	Male	66	14.4	1 surgery -r, RT/TMZ, 2 other	70	6 mg	None	-	None	60	11.3
106	Male	60	11	1 surgery -b, RT/TMZ	70	12 mg	None	-	None	40	2.5

BVZ, bevacizumab; Dex, dexamethasone; DLTs, dose limiting toxicities; RT, radiation therapy; TMZ, temozolomide.

Surgeries were performed for either biopsy (b) or resection (r) as indicated.

* Dexamethasone dose during the two-week treatment period is provided.

** Toxicities described further in Supplemental Table S2.

^ Serum Ab response described further in Supplemental Table S3.

¥ Other therapies may include clinical trials, chemotherapies and/or laser ablation.

§ Patient received 4 mg dexamethasone for two days, then 6 mg for 11 days before reducing back to 4 mg again.

Accepted Manuscript

Fig 1

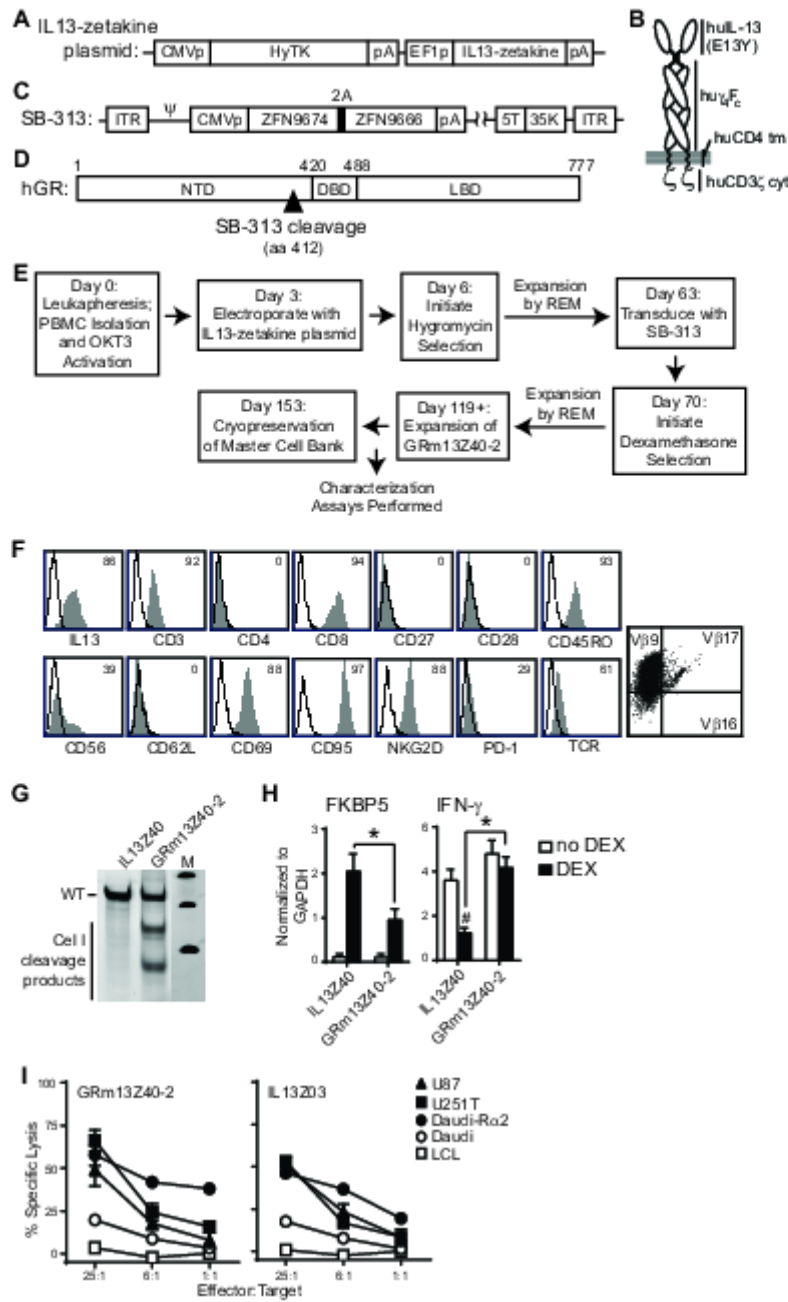
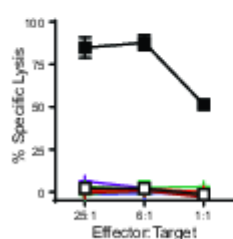


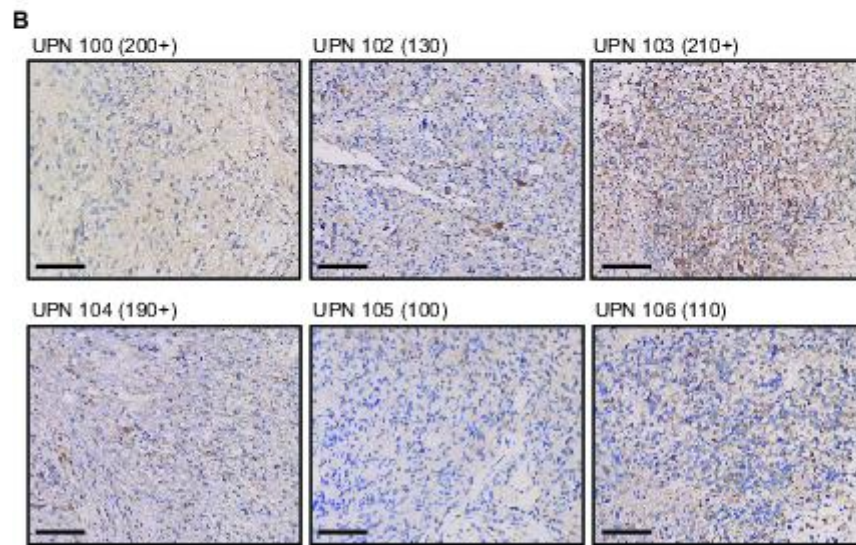
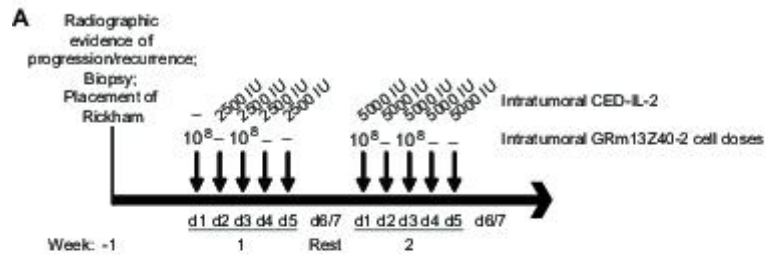
Fig 2



Symbol	Target Line	HLA				% Lysis @ 25:1 (S.D.)
		A1	A2	B1	B2	
■	TM-LCL-OKT3	3	24	8	51	84.7 (4.9)
□	TM-LCL	3	24	8	51	2.2 (0.4)
+	5-LCL	23	24	44	62	-0.6 (2.8)
+	12-LCL	3	31	58	60	1.1 (1.1)
+	21-LCL	11	26	27	60	1.5 (0.8)
+	32-LCL	1	2	7	8	-0.4 (0.8)
+	37-LCL	2	26	38	44	3.2 (0.5)
+	39-LCL	3	11	7	35	-1.6 (0.9)
+	44-LCL	2	24	21	3502	0.2 (0.8)
+	46-LCL	2	11	22	51	-1.3 (1.1)
+	65-LCL	2	33	49	65	6.3 (0.9)
+	79-LCL	3	68	44	47	0.9 (1.2)
GRm13Z40-2 Effectors		11	68	8	35	

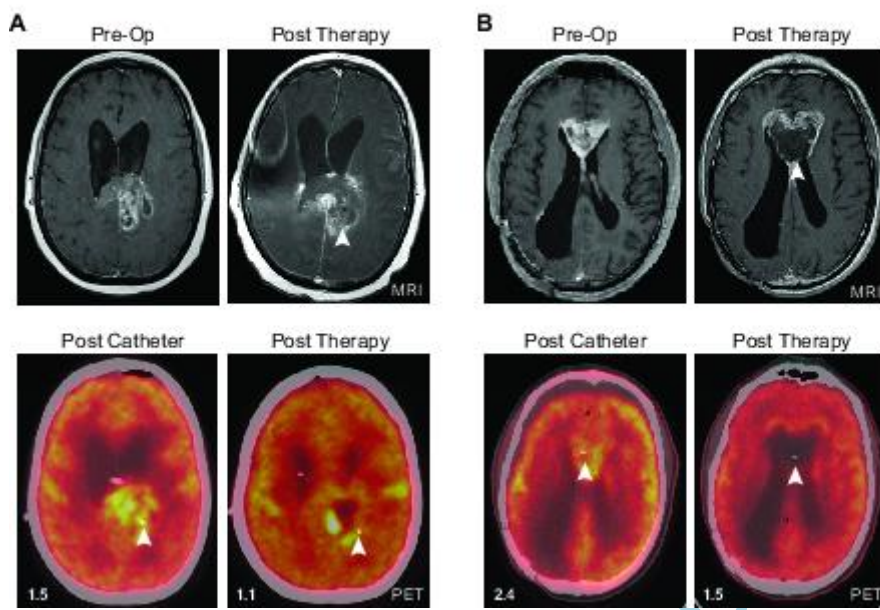
Accepted Manuscript

Fig 3



Accepted

Fig 4



Accepted Manuscript

Fig 5

